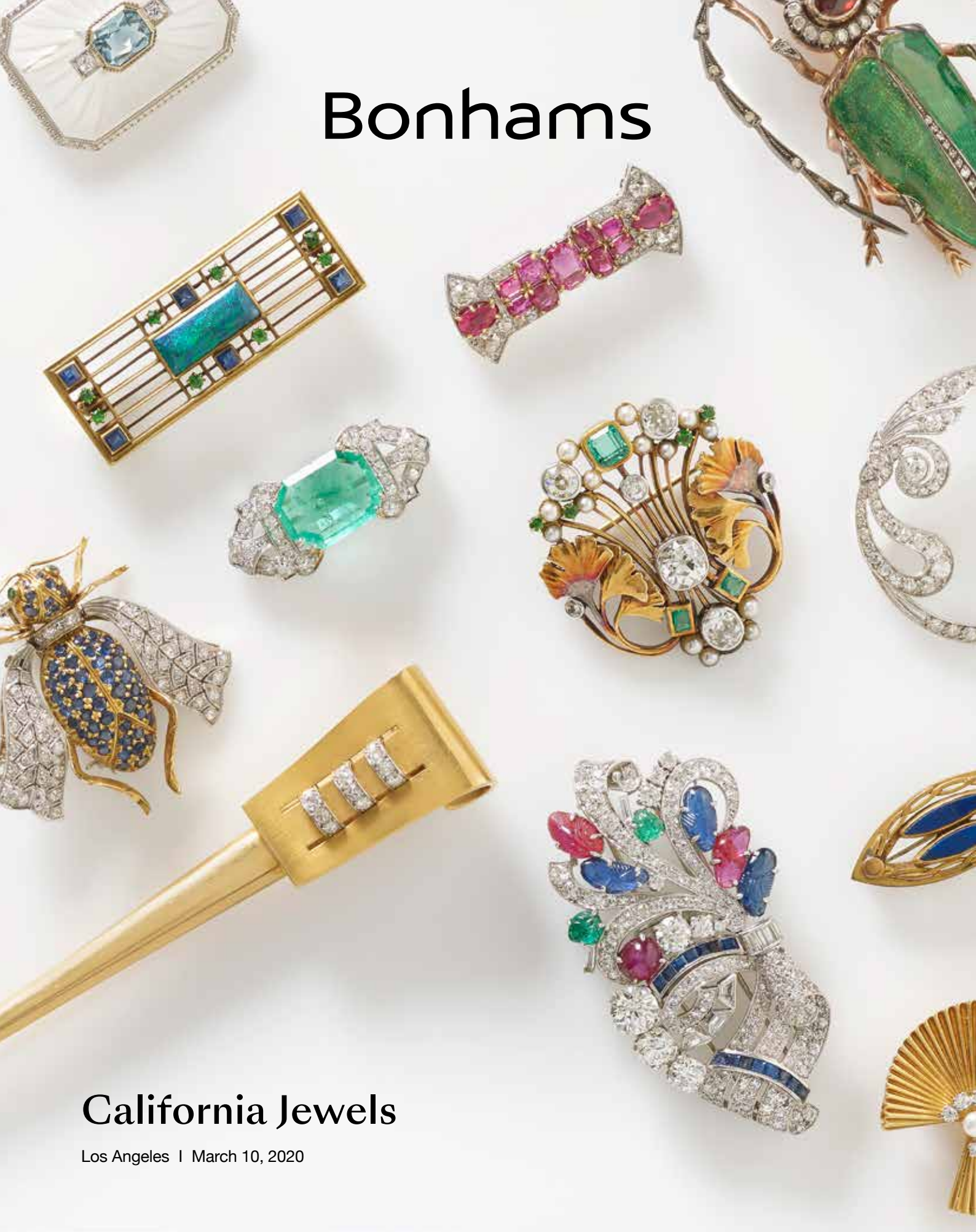


# Bonhams



## California Jewels

Los Angeles | March 10, 2020



# California Jewels

Los Angeles | Tuesday March 10, 2020, at 10am and 2pm

## BONHAMS

7601 West Sunset Blvd,  
Los Angeles, CA 90046  
[bonhams.com](http://bonhams.com)

## SALE

Session 1: 10am  
Lots 1-203  
Session 2: 2pm  
Lots 204-417  
(417 Lots)

## PREVIEW

**Los Angeles**  
Friday, March 6,  
12pm to 5pm  
Saturday, March 7,  
12pm to 5pm  
Sunday, March 8,  
12pm to 5pm  
Monday, March 9,  
12pm to 5pm

## SALE NUMBER:

26210

## CATALOG:

\$35.00

## ILLUSTRATIONS

Front and back cover: Lots 31,  
112, 118, 121, 176, 182, 191, 198,  
202, 212, 238, 269, 307, 353, 356,  
415, 417  
Inside front cover: Lots 50, 61, 219,  
221, 240, 290, 412  
Inside back cover: Lot 5, 178, 209,  
302, 306, 314, 392, 401

## BIDS

+1 (323) 850 7500  
+1 (323) 850 6090 fax  
Email: [bids.us@bonhams.com](mailto:bids.us@bonhams.com)  
To bid via the internet please visit  
[www.bonhams.com](http://www.bonhams.com)

## Telephone bidding

Bidding by telephone will only  
be accepted on a lot with a low  
estimate in excess of \$1000.

Please note that bids should be  
submitted no later than 4pm on  
the day prior to the sale. New  
bidders must also provide proof  
of identity when submitting bids.  
Failure to do this may result in your  
bid not being processed.

## Live online bidding is available for this sale

Please email [bids@bonhams.com](mailto:bids@bonhams.com)  
with 'live bidding' in the subject  
line 48 hours before the auction  
to register for this service.

## INQUIRIES

**Los Angeles**  
Emily Waterfall  
Director/Head of Department  
Augustus Poppleton, GG  
Alexandra Schettini  
Sloan Saunders  
[sloan.saunders@bonhams.com](mailto:sloan.saunders@bonhams.com)  
+1 (323) 436 5429

## New York

Brett O'Connor, Senior  
International Jewelry Director  
Caroline Morrissey,  
Head of Sales, US Jewelry  
Leslie Roskind  
Ophelia Lai  
Stephanie Ibonnet  
+1 (212) 461 6519

## San Francisco

Shannon Beck, GG  
Senior Specialist  
+1 (415) 503 3306

Jean Ghika  
Global Head of Jewelry  
[jean.ghika@bonhams.com](mailto:jean.ghika@bonhams.com)  
+44 207 468 8282

## CLIENT SERVICES

Monday to Friday 9am to 5pm  
+1 (323) 850 7500  
+1 (323) 850 6090 Fax

Please note lots are available for  
collection Monday to Friday 9am  
to 5pm

Please see pages 148 to 151 for  
bidder information including  
Conditions of Sale, after-sale  
collection and shipment.

Please note that irrespective  
of origin, jadeite and rubies (and  
any jewelry pieces that contain  
them) may now be imported into  
the United States.

## REGISTRATION IMPORTANT NOTICE

Please note that all customers,  
irrespective of any previous activity  
with Bonhams, are required to  
complete the Bidder Registration  
Form in advance of the sale. The  
form can be found at the back  
of every catalogue and on our  
website at [www.bonhams.com](http://www.bonhams.com)  
and should be returned by email or  
post to the specialist department  
or to the bids department at  
[bids.us@bonhams.com](mailto:bids.us@bonhams.com)

To bid live online and / or  
leave internet bids please go to  
[www.bonhams.com/auctions/26210](http://www.bonhams.com/auctions/26210)  
and click on the Register to bid link  
at the top left of the page.



# Important Names & Notices

## DIAMONDS, COLORED STONES & PEARLS

The Jewelry department of Bonhams & Butterfields recognizes that there are many various forms of treatments and enhancements used in diamonds and colored stones in order to improve their appearance and or color. Techniques such as heat treatment have been used to improve the color and transparency of both sapphires and rubies in addition to other gemstones. Techniques such as oiling have been used to enhance the clarity of emeralds while dying has been used to effect the color of jade. Techniques such as heat treatment, oiling, resin impregnation, irradiation, color diffusion, dying, fracture filling, and HTHP are just a few off the techniques that are in use today. Prospective buyers are therefore reminded that unless otherwise noted in our catalog description it must be assumed that some form of enhancement may have been used and that such treatment may not always be permanent or detectable and that our estimates have taken such possibilities into account. As a matter of policy, Bonhams & Butterfields endeavors to obtain certificates from recognized gemological laboratories when such certificates are deemed crucial to the authenticity of a gemstone. It is not possible however to gain certificates for all items offered for sale and it is therefore recommended where there is no mention of a certificate that all prospective buyers consult with one of our department specialists prior to purchase of such items.

PLEASE NOTE: A number of laboratories issue certificates that give more detailed descriptions of gemstones, however there may not be consensus between different laboratories on the degrees, or types of treatment for any particular gemstone. Neither is there necessarily consensus between different laboratories, or private appraisers, on the grading of diamonds. All gemstone weights are approximations only and although an independent laboratory grading may be used in the catalog text, we cannot guarantee such gradings.

Images shown may appear smaller or larger than actual size.

Although we endeavor to mention in our descriptions significant defects, needed repairs, absent stones and the like, **WE DO NOT GUARANTEE THAT THE DESCRIPTIONS ARE COMPREHENSIVE.** Please examine all lots carefully. It is the responsibility of the prospective bidder, or his agent, to determine the condition of lots during the preview. Condition reports have been created for most lots in this auction, and are available upon request. Please contact the Jewelry department at least two days prior to the sale date for additional information.

## REGULATED SPECIES MATERIALS AND CITES PERMITS

The export of a lot from the United States or import into certain countries may be subject to export or import regulations, licensure and/or other restrictions; in particular, lots containing plant or animal materials such as ivory, rhinoceros horn, tortoiseshell, coral, whalebone or certain types of woods, irrespective of age or value, may require the granting of one or more export or import licenses or certificates, or may be banned from import altogether by some countries. Moreover, the ability to obtain an export license or certificate does not insure the ability to obtain an import license or certificate in another country. Lots that contain such regulated species materials may also not be eligible for exportation or for re-importation into the United States if they are not at least 100 years of age, and, under current law, lots containing African Elephant Ivory may no longer be re-imported into the United States regardless of age. In addition, resales of lots containing certain regulated species materials may be subject to restrictions in some jurisdictions.

Lots noted in the catalog with a **Y** next to the lot number contain one or more such regulated plant or animal materials. **It is the buyer's responsibility to investigate any such restrictions and to obtain any relevant export or import licenses. Please note that this process is governed by local authorities and may take considerable time. Regardless of any delay in the obtaining of an export or import license or certificate or denial of a license's or certificate's issuance, purchased lots shall be paid for in accordance with the Conditions of Sale, and any such delay or denial shall not serve as the basis for cancellation of any sale.** Prospective buyers are advised to obtain information from the relevant regulatory authorities regarding export and import restrictions, requirements, and costs prior to bidding.

Prospective buyers should also check with their local (e.g. state) regulatory authorities regarding any local restrictions and/or permit requirements that may apply with respect to purchases of regulated species materials, including without limitation purchases of items containing elephant ivory or rhino horn. For example, we are advised that New York buyers of any lot containing elephant or mammoth ivory or rhino horn will be responsible for obtaining a New York State permit before taking possession of the lot within New York State, and that the State of New Jersey has banned the import of items containing elephant or marine mammal ivory or rhino horn into that state.

Upon request, Bonhams can refer the purchaser to a third party agent to assist the purchaser in attempting to obtain the appropriate licenses and/or certificates. However, there is no assurance that any necessary licenses or certificates can be obtained. Please contact the Specialist Department for a suggested list of shipping agents prior to placing a bid if you are uncertain as to whether a lot is subject to export/import license or certificate requirements or related restrictions.

## WATCHES

Although we endeavor to mention in our descriptions significant defects, needed repairs, absent stones and the like, **WE DO NOT GUARANTEE THAT THE DESCRIPTIONS ARE COMPREHENSIVE.** Please examine all watches carefully. It is the responsibility of the prospective bidder, or his agent, to determine the condition of watches during the preview. Except as expressly set forth in the Conditions of Sale, all watches are sold "as is". We do not guarantee the accuracy or operation of any watch function such as timekeeping, chronograph, calendar, repeater or register.

We make no judgments as to whether diamond dials or diamond bezels originated at the factory or are later additions.

# Index

# Including Property From

<u>NAME</u>	<u>LOT NUMBER</u>	
Asprey . . . . .	5	Property from a Long Island, New York Estate
Boris LeBeau . . . . .	271, 328, 329, 374	Property from a New Mexico Estate
Bulgari . . . . .	89, 99, 157	Property from a New York Estate
Cartier . . . . .	107, 156, 176, 383, 395	Property from a Northern California Estate
Chanel . . . . .	255	Property from a Palm Desert, CA Collector
Charriol . . . . .	364	Property from an East Coast Collector
Chaumet . . . . .	314	Property from an Oregon Lady
David Webb . . . . .	379, 381	Property from an Oro Valley, Arizona, Lady
Dorrit Moussaief . . . . .	310	Property from the Estate of Jessye Norman
Paloma Picasso for Tiffany & Co. . . . .	313	Property from the Estate of Lee Meyer
Elizabeth Locke . . . . .	93, 94	Property from the Estate of Madeline Van Eerde
Elsa Peretti for Tiffany & Co. . . . .	295	Property from the Estate of Mrs. Antoinette Quilleret
Frank Gehry for Tiffany & co. . . . .	154	Property from the Lathrop Estate
George L'enfant . . . . .	306	Property of a Calabasas Collector
Gump's . . . . .	111	Property of a California Lady
Gurhan . . . . .	90, 128	Property of a distinguished Scottish Family
Ilias Lalaounis . . . . .	133	Property of a Lady
Longines . . . . .	54	Property of a Los Angeles Lady
Ming's . . . . .	183	Property of a Prominent Los Angeles Lady
Na Hoku . . . . .	47	Property of a Thousand Oaks, California Collector
Palmiero . . . . .	236	Property of an Arizona Collector
Paloma Picasso for Tiffany & Co. . . . .	382	Property of an Arizona Lady
Piaget . . . . .	1	Property of Scott Williams
Pomellato . . . . .	11, 265	
Raymond Yard . . . . .	415	
Roberto Coin . . . . .	3, 287	
Rolex . . . . .	305, 391	
Ruser . . . . .	108	
Seaman Schepps . . . . .	97, 362	
Tiffany & Co. . . . .	100, 319, 363, 385	
Vacheron and Constantin . . . . .	192	
Van Cleef & Arpels . . . . .	307	

# Session One

Lots 1-203

10am







**PROPERTY FROM AN OREGON LADY, LOTS 1-8**

**1**  
**A DIAMOND AND GOLD WRISTWATCH, PIAGET**  
quartz movement, with mother-of-pearl dial; mounted in 18k gold; gross weight approximately: 80 grams; case diameter: 26mm; bracelet length: 6 1/2in.; signed: Piaget; numbered: 20127

**\$2,000 - 3,000**

**2**  
**A GOLD AND PINK TOURMALINE EAR CLIP AND PENDANT SET**  
mounted in 18k gold; gross weight approximately: 56 grams; pendant dimensions: 2 1/4 x 1 1/4in.; ear clip dimensions: 1 3/4in.

**\$2,500 - 4,500**

**3**  
**A DIAMOND AND 18K GOLD NECKLACE, ROBERTO COIN**  
mounted in 18k bi-color gold; estimated total diamond weight: 2.60cts; gross weight approximately: 88 grams; necklace length: 17in.; with signed box

**\$3,000 - 5,000**

**4**  
**A GOLD FOLIATE BRACELET**  
comprised of pierced and carved panels of a leaf motif; mounted in 18k gold; gross weight approximately: 93 grams; bracelet length: 7 1/4in.

**\$2,000 - 3,000**





3



4



**PROPERTY FROM AN OREGON LADY, LOTS 1-8**

**5  
A PAIR OF CITRINE AND DIAMOND EAR CLIPS, ASPREY**

centering pavé diamonds, surrounded by marquise-cut citrines; *mounted in 18k gold; estimated total diamond weight: 1.00ct; ear clip diameter: 1in.; signed: Asprey*

**\$2,000 - 3,000**

**6  
A GOLD OMEGA NECKLACE**  
*mounted in 14k gold; gross weight approximately: 53 grams; necklace length: 18 3/4in.*

**\$800 - 1,200**

**7  
A SAPPHIRE, CITRINE AND DIAMOND PENDANT**

centering an oval shaped sapphire weighing approximately 11.20cts; *mounted in 18k gold; estimated total diamond weight: 1.50cts; pendant dimensions: 2 x 3/4in.*

**\$4,000 - 6,000**



8

7

8  
**A GOLD HERRINGBONE NECKLACE**  
*mounted in 14k gold; gross weight  
approximately: 56 grams; necklace length:  
30in.*

**\$800 - 1,200**

9 No lot



10



12



11

10  
**A TURQUOISE, AND DIAMOND COLLAR NECKLACE**

*mounted in stainless steel and 18k gold; gross weight approximately: 115 grams; necklace length: 13in.; signed: Fasano*

**\$3,000 - 5,000**

11  
**A BI-COLOR GOLD AND DIAMOND RING, POMELLATO**

*mounted in 18k bi-color gold; ring size: 6; signed: Pomellato*

**\$1,300 - 1,500**

12<sup>Y</sup>  
**A PAIR OF GOLD, LAPIS, CORAL AND TURQUOISE EAR CLIPS**

*mounted in 18k gold; ear clip dimensions: 1/2 x 2 1/2in.*

**\$1,200 - 1,500**

Please note this item cannot be shipped internationally as it may contain endangered materials.

13<sup>Y</sup>  
**A PAIR OF GOLD, CORAL AND DIAMOND EAR CLIPS**

*mounted in 18k gold; ear clip diameter: 3/4in.*

**\$1,000 - 1,500**

Please note this item cannot be shipped internationally as it may contain endangered materials.

14  
**A PAIR OF BI-COLOR GOLD AND DIAMOND EAR CLIPS**

*mounted in 18k bi-color gold; estimated total diamond weight: 1.50cts; ear clip diameter: 1in.*

**\$1,500 - 2,000**



13



14



15



16

15

**A GOLD 'DE VILLE' WRISTWATCH, OMEGA**

quartz movement; mounted in 18k gold; gross weight approximately: 67 grams; bracelet length: 6 1/2 to 7in.; signed: Omega; numbered: 53394626

**\$800 - 1,000**

16<sup>Y</sup>

**A CARVED CORAL AND TURQUOISE BRACELET**

completed with an oval shaped cabochon-cut sapphire set into the clasp; mounted in 18k gold; gross weight approximately: 49 grams; bracelet length: 7 3/4in.

**\$2,500 - 3,500**

Please note this item cannot be shipped internationally as it may contain endangered materials.



17

18

19

17<sup>Y</sup>  
**A PAIR OF GOLD, MOTHER-OF-PEARL  
 AND DIAMOND EAR CLIPS**

*mounted in 18k gold; ear clip diameter: 1 1/4in.*

**\$1,200 - 1,500**

Please note this item cannot be shipped internationally as it may contain endangered materials.

18<sup>Y</sup>  
**A CORAL, ONYX AND DIAMOND  
 TORSADE NECKLACE**

*mounted in 18k white gold; estimated total diamond weight: 8.10cts; necklace length: 17 1/2in.*

**\$4,000 - 6,000**

Please note this item cannot be shipped internationally as it may contain endangered materials.

19  
**A PAIR OF PLATINUM AND DIAMOND  
 FLORAL EARRINGS**

*mounted in platinum; known diamond weight: 3.11cts; earring diameter: 1/2in.*

**\$3,000 - 5,000**



20

20<sup>Y</sup>

**A PAIR OF CORAL, AQUAMARINE AND DIAMOND EAR PENDANTS**

centering marquise-shaped aquamarines with cascading pear-shaped aquamarines and coral drops; mounted in 18k gold; gross weight approximately: 28 grams; ear clip dimensions: 2 1/4 x 1in.

**\$2,200 - 2,800**

Please note this item cannot be shipped internationally as it may contain endangered materials.

21



21

**A MULTI-STRAND DIAMOND BRACELET**

mounted in 18k white gold; estimated total diamond weight: 2.25cts; gross weight approximately: 41 grams; length: 7in.

**\$2,500 - 3,500**

22<sup>Y</sup>

**A GOLD, CORAL AND TOURMALINE BANGLE**

mounted in 18k gold; gross weight approximately 22 grams; bracelet length: 6 1/2in.

**\$2,000 - 3,000**

Please note this item cannot be shipped internationally as it may contain endangered materials.



23

23

**A TOURMALINE AND DIAMOND RING**

centering a oval shaped brilliant-cut tourmaline weighing 36.83cts; mounted in 18k white gold; known diamond weight: 1.08cts; ring size: 7 1/2

**\$4,500 - 5,500**

Accompanied by GIA report #6157512872, dated June 26,2013, stating the gemstone as: tourmaline.



25

24

**PROPERTY FROM THE ESTATE OF  
LEE MEYER, LOTS 24-45**

24  
**A COLORED CULTURED PEARL AND  
DIAMOND NECKLACE TOGETHER  
WITH A COLORED CULTURED PEARL  
NECKLACE**

*mounted in 18k gold and white gold; gross weight approximately: 203 grams; necklace lengths: 18 and 18 1/2in.*

**\$2,000 - 3,000**

Colored pearls untested for origin of color

25  
**A COLORED CULTURED PEARL AND  
DIAMOND RING AND EAR PENDANT  
SET**

*mounted in 18k gold; gross weight approximately: 31 grams; ring size: 7 3/4; ear pendant dimensions: 1 3/4 x 1/2in.*

**\$800 - 1,000**

Colored pearls untested for origin of color

26  
**A MULTI-STRAND CULTURED PEARL  
NECKLACE WITH LION'S HEAD  
CLASP**

*mounted in 14k bi-color gold; gross weight approximately: 244 grams; necklace length: 22 1/2in.; deficient one emerald*

**\$1,500 - 2,000**

27  
**A PESO COIN BRACELET**

*comprised of thirteen 2 1/2 peso coins; mounted in 14k gold; gross weight approximately: 58 grams; bracelet length: 7 1/2in.*

**\$800 - 1,000**



26



27





28



29



31

30

**PROPERTY FROM THE ESTATE OF LEE MEYER, LOTS 24-45**

**28  
A COLLECTION OF COLORED CULTURED PEARL AND JADE NECKLACES**

*mounted in 14k gold; gross weight approximately: 314 grams; necklace lengths: 29 1/2, 36 and 38in.*

**\$800 - 1,000**

Colored pearls untested for origin of color

**29  
A PAIR OF GOLD NECKLACES AND A CROSS PENDANT**  
centering round shaped cabochon-cut carnelians accented by enameled finials; *mounted in 14k gold; gross weight approximately: 80 grams; necklace lengths: 30 and 35 1/2in.; pendant dimensions: 3 1/8 x 2in.*

**\$1,500 - 2,000**

**30  
A PAIR OF CULTURED PEARL AND DIAMOND EAR PENDANTS**

*mounted in 14k gold; estimated total diamonds weight: 1.20cts; ear pendant drop: 2in.*

**\$1,200 - 1,500**

**31  
A COLLECTION OF FOUR BIRD BROOCHES**  
*mounted in 18k gold; gross weight approximately: 42 grams*

**\$1,000 - 1,500**



32



34



33

**PROPERTY FROM THE ESTATE OF  
LEE MEYER, LOTS 24-45**

**32  
A GOLD 50 PESO COIN NECKLACE**  
*mounted in 24k and 14k gold; gross weight  
approximately 54 grams; necklace length:  
28in.; pendant dimensions: 2 x 1 1/2in.*

**\$800 - 1,000**

**33  
A SAPPHIRE, RUBY AND DIAMOND  
BANGLE**  
*centering oval shaped cabochon-cut  
sapphires weighing approximately 1.00ct;  
mounted in 18k gold; gross weight  
approximately: 59 grams; bracelet length:  
6 3/4in.*

**\$1,200 - 1,500**

**34  
A GOLD RING AND PAIR OF EAR CLIPS,  
ITALY**  
*mounted in 18k gold; gross weight  
approximately: 27 grams; ring size: 5 3/4;  
ear clip diameter: 1 5/8in.*

**\$400 - 600**



35

**35**  
**A GOLD AND DIAMOND RING**  
*mounted in 18k gold; estimated total diamond weight: 4.30cts; ring size: 8*

**\$1,000 - 1,500**

36

**36**  
**A CULTURED PEARL AND LIONS HEAD NECKLACE**  
*mounted in 14k gold; gross weight approximately: 123 grams; necklace length: 18 1/4in.*

**\$1,000 - 1,500**

37

**37**  
**A GOLD, RUBY, DIAMOND AND CULTURED PEARL RING AND EAR CLIP SET**  
*mounted in 18k gold; estimated total diamond weight: 2.10cts; gross weight approximately: 41 grams; ring size: 7; ear clip dimensions: 1 x 5/8in.*

**\$2,000 - 3,000**



38



39

**PROPERTY FROM THE ESTATE OF  
LEE MEYER, LOTS 24-45**

38  
**A GOLD COLLAR NECKLACE**  
*mounted in 18k gold; gross weight  
approximately: 130 grams; necklace length:  
15in.*

**\$2,000 - 3,000**

39  
**A GOLD AND CITRINE CATERPILLAR  
BROOCH AND A BASEBALL BAT  
BROOCH**  
*mounted in 18k gold; baseball bat  
dimensions: 1 3/4 x 3/4in.; caterpillar brooch:  
1 3/4 x 1in.*

**\$800 - 1,000**



40

**40**  
**A CITRINE TORSADE NECKLACE**  
*mounted in 14k gold; estimated total diamond weight: 1.30cts; gross weight approximately; 112 grams; necklace length: 17in.*

**\$800 - 1,000**



41

**41**  
**A GOLD AND DIAMOND BROOCH**  
*mounted in 14k gold; estimated total diamond weight: 3.30cts; brooch dimensions: 1 1/4 x 1 1/2in.*

**\$2,500 - 3,500**



42

**42**  
**AN ANTIQUE CITRINE BRACELET**  
*centering oval shaped citrines weighing approximately 175cts; mounted in sterling silver; gross weight approximately: 47 grams; bracelet length: 7in.*

**\$800 - 1,000**



43



44



45

**PROPERTY FROM THE ESTATE OF  
LEE MEYER, LOTS 24-45**

43

**A GOLD AND DIAMOND RING**

centering a cut-cornered square modified brilliant diamond with a known weight of 5.09cts; *mounted in bi-color 14k gold; estimated remaining diamond weight; 3.20cts; ring size: 7 1/2*

**\$5,000-7,000**

44

**A MABÉ PEARL AND DIAMOND RING**

centering a mabé pearl measuring approximately 19.21 x 19.23mm; *mounted in platinum; estimated total diamond weight: 1.85cts; ring size: 4 3/4*

**\$800 - 1,000**

45

**A GOLD REPOUSSÉ DRAGON BANGLE**

*mounted in 24k gold; gross weight approximately: 67 grams; 7 1/2in.*

**\$1,200 - 1,500**







46



47



48



49

46  
**A DIAMOND, PLATINUM AND GOLD BOX**  
*mounted in platinum and 18k gold;  
gross weight approximately: 113 grams;  
dimensions: 3 1/2 x 1 1/4 x 1 5/8in.*

**\$2,500 - 3,500**

47  
**A GOLD AND DIAMOND FLORAL BRACELET, NA HOKU**  
*mounted in 18k gold; gross weight  
approximately: 31 grams; bracelet length:  
7 1/4in.; signed: Na Hoku*

**\$1,500 - 2,000**

48  
**A GOLD KNOT BROOCH**  
*mounted in 18k gold; weighing  
approximately: 65 grams; dimensions:  
2 x 2in.*

**\$1,000 - 1,500**

49  
**A PAIR OF GOLD AND GEMSTONE EAR PENDANTS**  
*including peridots, amethysts and citrines;  
mounted in 18k gold; ear pendant  
dimensions: 3/4 x 2in.*

**\$1,200 - 1,500**

**PROPERTY FROM A NEW MEXICO ESTATE**

50  
**A DIAMOND AND SAPPHIRE 'EYE LOVE' RING, ANA KATARINA**

*centering an oval shaped carved onyx of an eye measuring approximately 19.71 x 15.75mm; mounted in 18k gold; size: 6 1/4; with maker's mark for Ana Katarina*

**\$2,000 - 3,000**

51  
**A GOLD LINK NECKLACE**  
*mounted in 18k gold; weighing  
approximately: 182 grams; length: 30 1/4in.*

**\$4,000 - 6,000**

52  
**A GOLD 'DE VILLE' WRISTWATCH, OMEGA**  
*quartz movement; mounted in 18k gold;  
gross weight approximately: 69 grams;  
bracelet length: 6 3/4 to 7 1/4in.; signed:  
Omega; numbered: 53868681*

**\$800 - 1,000**



50



52

51



53

54

55

57

56

**PROPERTY OF A LOS ANGELES LADY,  
LOTS 53-61**

**53  
AN AMETHYST AND DIAMOND HALO RING**  
centering an oval shaped mixed-cut amethyst weighing approximately 11.95cts; mounted in 14k white gold; estimated total diamond weight: 1.50cts; ring size: 6 1/2in.

**\$1,800 - 2,200**

**54  
A GOLD AND DIAMOND WATCH, LONGINES**  
manual wind 17 jewel movement, unadjusted; mounted in 14k gold; gross weight approximately: 46 grams; length: 6 1/2in.; signed: Longines; reference number 6624

**\$1,200 - 1,500**

**55  
A PLATINUM AND DIAMOND BRACELET**  
mounted in platinum; estimated total diamonds weight: 3.00cts; gross weight approximately: 26 grams; bracelet length: 6 1/4in.

**\$2,000 - 3,000**

**56  
A THREE ROW DIAMOND BAND**  
mounted in 18k white gold; estimated total diamond weight: 1.65cts; ring size: 6 3/4

**\$1,500 - 2,000**

Deficient two diamonds

**57  
A PAIR OF WHITE GOLD AND DIAMOND EAR CLIPS**  
mounted in 18k white gold; estimated total diamond weight: 1.80cts; ear clip diameter: 1/2in.

**\$5,000 - 7,000**



58

58  
**A CITRINE AND DIAMOND PENDANT**  
centering a rectangular step-cut citrine weighing approximately 81.60cts; mounted in 18k bi-color gold; gross weight approximately: 37 grams; pendant dimensions: 2 1/2 x 1 1/2in.

**\$1,500 - 2,000**



59

59  
**A PLATINUM AND DIAMOND CLUSTER RING**  
*mounted in platinum; estimated total diamond weight: 3.05cts; ring size: 6*

**\$1,500 - 2,000**

60  
**A GOLD AND DIAMOND RETRO BRACELET, INDUSTRIA ARGENTINA**  
*mounted in 18k bi-color gold; estimated total diamond weight: 2.05cts; gross weight approximately: 86 grams; bracelet length: 8in.; signed: Industria Argentina*

**\$3,500 - 4,500**



61

61  
**A PLATINUM AND DIAMOND CLUSTER RING**  
centering a pear shaped brilliant-cut diamond with a known weight of 3.54cts; *mounted in platinum; estimated remaining diamond weight: 1.50cts; ring size: 5 3/4*

**\$12,000 - 15,000**

Accompanied by GIA report #2205876935, dated January 29, 2020, stating the Diamond as: G color, VVS2 clarity



62

63

64

65

62  
**A COLLECTION OF THREE GOLD AND DIAMOND BANDS**  
*mounted in 18k white, rose, and yellow gold; estimated total diamond weight: 5.25cts; size: 6 3/4*

**\$1,500 - 2,000**

63  
**A DOUBLE STRAND CULTURED PEARL NECKLACE WITH PEARL AND DIAMOND CLASP**  
*mounted in 14k gold; gross weight approximately: 26 grams; necklace length: 17 1/2in.*

**\$800 - 1,200**  
**To be sold without reserve**

64  
**A WHITE GOLD AND DIAMOND SOLITAIRE RING**  
*centering a rectangular step-cut diamond with a known weight of 0.82ct; mounted in 18k white gold; size: 6 1/2*

**\$2,000 - 3,000**

65  
**A PAIR OF DIAMOND EAR PENDANTS**  
*mounted in 18k bi-color gold; estimated total diamond weight: 3.70cts; dimensions: 2 x 1 1/2in.*

**\$1,800 - 2,200**



66

66

**A PAIR OF ROSE GOLD AND DIAMOND EAR PENDANTS**

*mounted in 18k rose gold; estimated total diamond weight: 3.95cts; ear pendant dimensions: 7/8 x 1 1/4in.*

**\$1,200 - 1,500**

67

**A WHITE GOLD AND DIAMOND RIVIÈRE NECKLACE**

*mounted in 18k white gold; estimated total diamond weight: 21.75cts; gross weight approximately: 32 grams; necklace length: 17in.*

**\$8,500 - 9,500**

68

68

**A ROSE GOLD AND DIAMOND SOLITAIRE RING**

*centering a rectangular step-cut diamond with a known weight of 0.80ct; mounted in 18k rose gold; size: 6 3/4*

**\$2,000 - 3,000**

**PROPERTY OF SCOTT WILLIAMS**

69

**A PAIR OF AQUAMARINE AND DIAMOND EAR PENDANTS**

*centering oval shaped aquamarines weighing approximately 4.75cts; mounted in 18k rose gold; estimated total diamond weight: 1.35cts; ear pendant dimensions: 1/2 x 1 1/8in.*

**\$1,200 - 1,800**

69



70

71

72

**70**  
**A BLUE TOPAZ AND DIAMOND RING**  
 centering a checkerboard-cut cabochon topaz measuring approximately 23.80 x 20.10mm; mounted in 18k gold and gold plated sterling silver; ring size: 7

**\$800 - 1,200**

**71**  
**A COLORED CULTURED PEARL NECKLACE WITH DIAMOND CLASP**  
 mounted in 18k gold; gross weight approximately: 83 grams; necklace length: 16 3/4in.

**\$2,000 - 3,000**

Colored pearls untested for origin of color

**72**  
**A PAIR OF DIAMOND, TOPAZ AND EMERALD EAR PENDANTS**  
 mounted in 18k white gold; gross weight approximately: 29 grams; ear pendant drop: 3 x 1 1/2in.

**\$1,000 - 1,500**

**73**  
**A PAIR OF TURQUOISE AND DIAMOND EAR PENDANTS**  
 mounted in 14k white gold; ear pendant dimensions: 1 x 1 1/2in.

**\$800 - 1,000**

**74**  
**A WHITE GOLD AND DIAMOND LONGCHAIN**  
 mounted in 18k white gold; estimated total diamond weight: 17.95cts; gross weight approximately: 37 grams; necklace length: 32in.

**\$6,500 - 7,500**

**75**  
**A PAIR OF ROCK CRYSTAL, TURQUOISE AND DIAMOND EAR PENDANTS**  
 mounted in 18k white gold; gross weight approximately: 26 grams; ear pendant dimensions: 2 1/2 x 5/8in.

**\$1,200 - 1,500**





73



74



75



76



77

78

**76  
A WHITE GOLD AND DIAMOND SPIRAL RING**

*mounted in 18k white gold; estimated total diamond weight: 1.85cts; ring size: 6*

**\$1,000 - 1,500**

**77  
A TURQUOISE AND DIAMOND BRACELET**

*mounted in blackened sterling silver and 14k gold; estimated total diamond weight: 14.00cts; gross weight approximately: 54 grams; bracelet length: 7 3/8in.*

**\$1,800 - 2,500**

**78  
A MOONSTONE AND DIAMOND BRACELET**

*mounted in blackened sterling silver; estimated total diamond weight: 1.75cts; gross weight approximately: 27 grams; bracelet length: 7 1/2in.*

**\$800 - 1,200**  
**To be sold without reserve**



79

79  
**A PAIR OF OPAL AND DIAMOND EAR PENDANTS**  
*mounted in sterling silver with gold post backs; estimated total diamond weight: 2.75cts; ear pendant drop: 2 5/8in.*

**\$800 - 1,200**  
To be sold without reserve



80

80  
**A WHITE GOLD DIAMOND BYPASS RING**  
*mounted in 18k white gold; estimated total diamond weight: 3.55cts; ring size: 7*

**\$2,500 - 3,500**



81

81  
**AN AGATE AND DIAMOND PENDANT NECKLACE**  
*mounted in blackened sterling silver; gross weight approximately; 50 grams; necklace length: 30in.*

**\$800 - 1,200**  
To be sold without reserve



82

82  
**A SHAGREEN AND DIAMOND CUFF BRACELET**  
*mounted in blackened sterling silver; estimated total diamond weight: 6.00cts; bracelet length: 6 3/4in.*

**\$800 - 1,200**



83

84

85

**PROPERTY FROM A LONG ISLAND,  
NEW YORK ESTATE**

83  
**A TURQUOISE AND DIAMOND RING**  
 centering a rectangular mixed-cut cabochon  
 turquoise, measuring approximately: 17.12  
 x 14.62 x 11.12mm; mounted in 14k gold;  
 estimated total diamond weight: 4.10cts;  
 size: 5 3/4

**\$1,500 - 2,000**

**PROPERTY OF AN ARIZONA LADY**

84  
**A DIAMOND LINK NECKLACE**  
 mounted in 18k white gold; estimated total  
 diamond weight: 1.50cts; gross weight  
 approximately: 41 grams; length: 17 1/2in.

**\$1,500 - 2,000**

85<sup>Y</sup>  
**A PAIR OF TURQUOISE, CORAL AND  
DIAMOND EAR PENDANTS**  
 mounted in 18k gold; gross weight  
 approximately: 35 grams; ear pendant  
 dimensions: 5/8 x 2in.

**\$1,500 - 2,000**

Please note this item cannot be shipped  
 internationally as it may contain endangered  
 materials.



86



88



87



89

86  
**A PAIR OF AQUAMARINE, TURQUOISE AND DIAMOND EAR PENDANTS**  
*mounted in 18k white gold; ear pendant dimensions: 2 1/2 x 1/2in.*

**\$1,000 - 1,500**

87  
**A WHITE GOLD AND DIAMOND BAND**  
*mounted in 18k white gold; estimated total diamond weight: 1.15cts; ring size: 6 1/4*

**\$800 - 1,000**

88  
**A TOURMALINE, TURQUOISE AND DIAMOND RING**  
*centering an oval shaped pink tourmaline weighing approximately 9.15cts; mounted in 18k gold; ring size: 6 3/4*

**\$1,000 - 1,500**

89  
**AN ANTIQUE COIN AND DIAMOND 'Y' NECKLACE, BULGARI**  
*comprised of a bezel-set coins of Aurelius Commodus Augustus of Roma, and Darius Rex of Persia; mounted in 18k gold; gross weight approximately: 41 grams; necklace length: 18in.; signed: Bulgari; with signed box*

**\$1,500 - 2,500**



90



92



91

90  
**A COLORED DIAMOND AND DIAMOND NECKLACE, GURHAN**  
centering colored rose-cut graduated diamonds; mounted in 24k gold; gross weight approximately: 52 grams; necklace length: 17 3/4in.; signed: Gurhan; numbered: NZ466

**\$2,500 - 4,500**

Colored diamonds untested for origin of color.

91  
**A WHITE GOLD AND CARVED ROCK CRYSTAL ZODIAC BRACELET**  
mounted in 18k white gold; gross weight approximately: 38 grams; bracelet length: 7 1/2in.  
**\$2,000 - 4,000**

92  
**A JADE SADDLE RING**  
ring size: 7 1/2  
**\$2,000 - 4,000**  
See department for copy of Jade report.



93

93  
**A PAIR OF CARNELIAN EAR CLIPS AND PENDANT TOGETHER WITH VENETIAN GLASS PENDANT AND EAR CLIPS, ELIZABETH LOCKE**

*mounted in 19k gold; gross weight approximately: 69 grams; signed: Elizabeth Locke*

**\$2,000 - 4,000**

94

94  
**A PAIR OF VENETIAN GLASS AND MOONSTONE EARCLIPS AND TWO PENDANTS, ELIZABETH LOCKE**

*comprised of venetian glass, backed in mother-of-pearl and encircled by cabochon-cut moonstones; mounted in 19k gold; gross weight approximately: 57 grams; signed: Elizabeth Locke*

**\$2,000 - 4,000**

Please note this item cannot be shipped internationally as it may contain endangered materials.



95



96



97



99



98

**PROPERTY FROM A PALM DESERT,  
CA COLLECTOR, LOTS 95-96**

95  
**A PAIR OF MICRO-MOSAIC EARRINGS**  
*mounted in 14k gold; ear clip dimensions: 1  
1/8 x 7/8in.*

**\$800 - 1,200**  
To be sold without reserve

96  
**TWO PAIRS OF GOLD AND MABE PEARL  
EARRINGS**  
*mounted in 18k and 14k gold; gross weight  
approximately: 29 grams; ear clip diameter:  
3/4in.*

**\$1,200 - 1,800**  
To be sold without reserve

97  
**AN OPAL, RUBY, AND DIAMOND  
BRACELET, SEAMAN SCHEPPS**  
*composed of three strands of round opal  
beads, measuring approximately from 4.50  
to 6.00 mm, with ruby and crystal spacers,  
the clasp set with a large, oval cabochon  
opal, measuring approximately 22.20 x 17.75  
x 8.15 mm, with old European-cut diamond  
and ruby cabochon detail; signed Seaman  
Schepps; mounted in 14k gold; length: 7 in.*

**\$2,000 - 3,000**

98  
**A GOLD, CULTURED PEARL AND  
DIAMOND BYPASS RING**  
*centering two cultured pearls measuring  
approximately 7.60mm; mounted in 18k  
gold; ring size: 5 1/2*

**\$1,000 - 1,500**

99  
**A TRI-COLOR GOLD 'TUBOGAS'  
WATCH, BULGARI**  
*quartz movement; mounted in 18k tri-color  
gold; case diameter: 23mm; gross weight  
approximately: 76 grams; bracelet length: 5  
1/4in.; signed: Bulgari; numbered: BB 23 2T*

**\$3,000 - 5,000**





100

**100  
A MEN'S GOLD 'MARK COUPE'  
WRISTWATCH, TIFFANY & CO.**

swiss quartz movement; mounted in 18k gold; gross weight approximately: 76 grams; length: 6 1/2 to 8in.; signed: Tiffany & Co.; numbered: 090222396

**\$1,200 - 1,800**



101

**101  
A PAIR OF GOLD, RED AGATE AND  
DIAMOND EAR CLIPS**

mounted in 18k gold; ear clips diameter: 1in.

**\$800 - 1,000**



102

**102  
A GOLD AND DIAMOND NECKLACE,  
ITALY**

mounted in 18k gold; estimated total diamond weight: 6.45cts; gross weight approximately: 156 grams; necklace length: 14 1/4in.

**\$8,000 - 10,000**



103

105

104

103  
**A PAIR OF GOLD EAR CLIPS, TOGETHER WITH A GOLD RING**  
*mounted in 18k gold; gross weight approximately: 46 grams; ear clip dimensions: 1 x 1/2in., ring size: 6 3/4*  
**\$800 - 1,000**

104  
**A LADY'S RUBY AND DIAMOND BRACELET WATCH**  
*quartz movement; mounted in 18k bi-color gold; estimated total diamond weight: 1.00ct; gross weight approximately: 134 grams; case: 14mm; bracelet length: 7 1/4in.*  
**\$2,500 - 3,500**

105  
**A GOLD, DIAMOND AND SAPPHIRE ETERNITY BAND**  
*mounted in 18k gold; estimated total diamond weight: 1.85cts; ring size: 7*  
**\$1,800 - 2,500**



106



107



108

106<sup>Y</sup>

**A PAIR OF GOLD AND CORAL EAR CLIPS**

centering oval shaped cabochon-cut corals; mounted in 18k gold; ear clip dimensions: 7/8 x 5/8in.

**\$1,200 - 1,500**

Please note this item cannot be shipped internationally as it may contain endangered materials.

107

**A GOLD NECKLACE, CARTIER**

mounted in 14k gold; gross weight approximately: 172 grams; necklace length: 14 3/4in.; signed: Cartier

**\$5,000 - 7,000**

108

**A SAPPHIRE AND 14K GOLD CIGARETTE BOX, RUSER**

pierced "Diana Lewis Powell", with the figure of "Diana and a Gazelle" on the lid; mounted in 14k gold; gross weight approximately: 140 grams; dimensions: 3 3/4 x 2 x 1 3/8in.; signed: Ruser

**\$2,500 - 3,500**



109



110



111



112

109

**AN OPAL HINGED BANGLE BRACELET TOGETHER WITH AN OPAL BROOCH**

*mounted in 14k gold; gross weight approximately: 32 grams; bracelet length: 7 1/2in.; brooch dimensions: 1 1/2 x 1 1/2in.*

**\$800 - 1,000**

**To be sold without reserve**

110

**A GOLD, DIAMOND AND ENAMEL BRACELET**

*centering an old mine-cut diamond weighing approximately 1.00ct; mounted in 18k gold; estimated remaining diamond weight: 0.80ct; gross weight approximately: 73 grams; bracelet length: 7in.*

**\$1,800 - 2,200**

111

**A GOLD AND SHAKUDO BROOCH OF A TURTLE, GUMP'S**

*mounted in 18k gold and shakudo; brooch dimensions: 1 9/16 x 9/16in.; signed: Gump's*

**\$400 - 600**

112

**A CITRINE, DIAMOND AND ENAMEL PENDANT**

*centering a lozenge shaped citrine weighing approximately 26.15cts; mounted in 14k gold; pendant dimensions: 3 3/8 x 1 21/32in.*

**\$2,000 - 3,000**



113

114

113

**A GEM-SET SCARAB AND CULTURED PEARL NECKLACE**

including carved moonstone, lapis lazuli, citrine, amethyst and turquoise; mounted in gold; gross weight approximately: 55 grams; necklace length: 13 3/4in.

**\$3,000 - 5,000**

114

**A PAIR OF CARVED SAPPHIRE AND DIAMOND EAR PENDANTS**

mounted in 14k gold with 18k earring backs; estimated total diamond weight: 1.50cts; ear pendant dimensions: 1 1/2 x 7/8in.

**\$800 - 1,200**



115



116



117



118

**PROPERTY FROM A NORTHERN CALIFORNIA ESTATE,  
LOTS 115-127**

115  
**A BLISTER PEARL, RUBY AND DIAMOND PENDANT,  
RUSSIAN, LATE 19TH CENTURY**  
*mounted in gold, with gold-tone pin; gross weight approximately: 43  
grams; pendant dimensions: 2 7/8 x 1 11/16in.*

**\$1,500 - 2,000**

116  
**A BAROQUE CULTURED PEARL, DIAMOND AND COLORED  
DIAMOND SWAN BROOCH**  
*centering a baroque cultured pearl measuring approximately 19.77  
x 15.91 x 14.93mm; mounted in 18k gold; estimated total diamond  
weight: 3.00cts; brooch dimensions: 1 7/8 x 1 7/16in.*

**\$2,000 - 3,000**

Colored diamonds untested for origin of color.

117  
**A DIAMOND AND EMERALD LION HEAD BROOCH**  
*mounted in 14k gold; estimated total diamond weight: 2.00cts;  
brooch dimensions: 1 3/8 x 2 1/8in.; deficient one diamond*

**\$800 - 1,200**

118  
**A GREEN ENAMEL, GARNET, RUBY AND DIAMOND BEETLE  
BROOCH**  
*mounted in silver-topped gold; gross weight approximately:  
31 grams; brooch dimensions: 2 7/8 x 1 3/4in.*

**\$1,500 - 2,000**



119

119  
**A PLATINUM, DIAMOND AND SAPPHIRE BRACELET**  
*mounted in platinum; estimated total diamond weight: 15.00cts; gross weight approximately: 83 grams; bracelet length: 6 3/4in.; deficient one diamond*

**\$6,000 - 8,000**

120  
**A WHITE GOLD AND DIAMOND BRACELET**  
*mounted in 18k white gold, estimated total diamond weight: 6.75cts; gross weight approximately: 36 grams; bracelet length: 7 1/4in.*

**\$3,000 - 5,000**

121  
**A PLATINUM AND DIAMOND BROOCH**  
*suspending a pear shaped diamond drop; mounted in platinum; estimated total diamond weight: 4.90cts; brooch dimensions: 1 1/2 x 1 5/8in.*

**\$2,000 - 3,000**



121



122

122  
**A GEMSTONE AND DIAMOND BUTTERFLY BROOCH**  
*including mixed-cut pink and green tourmalines and sapphires; mounted in 18k gold; estimated total diamond weight: 1.00ct; gross weight approximately: 32 grams; brooch dimensions: 2 1/2 x 2in.*

**\$1,500 - 2,000**

123  
**AN OPAL AND DIAMOND BROOCH**  
*mounted in 18k white gold; estimated total diamond weight: 1.00ct; pendant dimensions: 2 x 1in.*

**\$2,000 - 3,000**



123



124



126



125



127

**PROPERTY FROM A NORTHERN CALIFORNIA ESTATE,  
LOTS 115-127**

124  
**A SAPPHIRE AND DIAMOND BROOCH**  
*mounted in 18k gold; estimated total diamond weight: 5.50cts; gross weight approximately: 43 grams; brooch dimensions: 2 1/4 x 2 1/2in.*

**\$3,000 - 5,000**

125  
**A PAIR OF CULTURED BAROQUE PEARL AND DIAMOND EAR CLIPS**  
*each ear clip centering a half of a baroque cultured pearl; mounted in 18k gold; estimated total diamond weight: 1.15cts; ear clip dimensions: 1 3/4 x 7/8in.*

**\$800 - 1,200**

126  
**A GOLD AND SODALITE BROOCH**  
*mounted in 18k gold; gross weight approximately: 53 grams; brooch dimensions: 2 1/4 x 1 7/8in.*

**\$1,000 - 1,500**

127  
**A GOLD ELEPHANT LINK BRACELET**  
*mounted in 18k gold; gross weight approximately: 88 grams; bracelet length: 7 1/2in.*

**\$2,000 - 3,000**







129

128

128



130



131



132



133

128

**GROUP OF THREE NECKLACES, GURHAN**

comprised of a rose-cut garnet necklace, a bronze and freshwater cultured pearl longchain and a hammered gold necklace; mounted in 24k gold, gross weight approximately 120 grams; necklace lengths: 17 to 39in.

**\$2,200 - 3,200**

129

**A RUBY, DIAMOND AND COLORED DIAMOND SNAKE RING**

centering an oval shaped ruby weighing approximately 1.15cts; mounted in 18k gold; ring size: 7 1/4

**\$2,500 - 3,500**

Colored diamonds untested for origin of color.

130

**A GOLD, EMERALD AND DIAMOND RING**

centering pear shaped mixed-cut emeralds weighing approximately 3.45cts; mounted in 18k gold; ring size: 6 1/2

**\$1,500 - 2,000**

131<sup>Y</sup>

**A PAIR OF EBONIZED WOOD, TURQUOISE AND CORAL EAR CLIPS**

mounted in 18k gold; ear clip dimensions: 7/8in.

**\$1,000 - 1,500**

Please note this item cannot be shipped internationally as it may contain endangered materials.

132

**A PAIR OF GOLD EAR PENDANTS**

mounted in 24k gold; ear pendant dimensions: 2 1/8 x 3/8in.

**\$2,000 - 3,000**

**PROPERTY OF A CALABASAS COLLECTOR**

133

**A SAPPHIRE, RUBY AND DIAMOND NECKLACE, ILIAS LALAOUNIS**

mounted in 18k gold; 14k gold chain extension; gross weight approximately: 111 grams; length: 14 1/2in.; signed: Lalaounis; with signed pouch

**\$4,000 - 6,000**



134



135

136



137

134

**A GOLD AND DIAMOND HINGED BANGLE BRACELET**

*mounted in 18k gold; estimated total diamond weight: 1.00ct; gross weight approximately: 39 grams; bracelet length: 6 1/2in.*

**\$3,500 - 5,500**

135

**A GOLD, EMERALD AND DIAMOND NECKLACE**

*mounted in 18k gold; estimated total diamond weight: 4.50cts; gross weight approximately: 37 grams; necklace length: 18 1/8in.*

**\$4,000 - 6,000**

136

**A GOLD AND DIAMOND LINE BRACELET**

*mounted in 18k gold; estimated total diamond weight: 6.30cts; bracelet length: 7in.*

**\$6,500 - 8,500**

137

**A PAIR OF GOLD AND DIAMOND FLOWER SET DAY/NIGHT EAR PENDANTS**

*mounted in 18k gold; estimated total diamond weight: 3.60cts; ear pendant dimensions: 2 1/8 x 1/4in*

**\$2,500 - 3,500**



138

140

139

141

138  
**A PAIR OF GOLD AND DIAMOND FLOWER EAR CLIPS**  
*mounted in 18k gold; known total diamond weight: 4.08cts; ear clip diameter: 1in.*  
**\$2,500 - 3,500**

**PROPERTY OF AN ARIZONA LADY**

139  
**A PAIR OF DIAMOND EAR CLIPS**  
*mounted in 10k gold; estimated total diamond weight: 3.65cts; dimensions: 1 1/4in.*  
**\$1,200 - 1,500**

140  
**A GOLD, EMERALD AND DIAMOND NECKLACE**  
*centering a fan shaped step-cut emerald weighing approximately 30.95cts; mounted in 14k gold; estimated total diamond weight: 7.40cts; gross weight approximately: 55 grams; length: 16 1/2in.*  
**\$5,000 - 7,500**

141  
**A GOLD AND DIAMOND BAND**  
*mounted in 18k gold; estimated total diamond weight: 3.00cts; ring size: 6 1/4*  
**\$1,800 - 2,200**



142



143



145



144

142

**A PAIR OF WHITE GOLD, PINK TOURMALINE AND DIAMOND EAR PENDANTS**

centering a pair of oval shaped cabochon-cut pink tourmalines weighing approximately 14.45 and 14.00cts; mounted in 18k white gold; estimated total diamond weight: 2.00cts; ear pendant drops: 1 3/4 x 3/4in.

**\$1,500 - 2,000**

143

**A WHITE GOLD AND DIAMOND ETERNITY BAND**

mounted in 18k white gold; estimated total diamond weight: 5.10cts; ring size: 6 3/4

**\$2,200 - 2,800**

144

**A GEM-SET, DIAMOND AND COLORED DIAMOND HINGED BANGLE**

mounted in 18k blackened gold; estimated total white diamond weight: 3.65cts; estimated total cognac diamond weight: 5.85cts; gross weight approximately: 96 grams; length: 7in.; (colored diamonds untested for origin of color)

**\$3,500 - 5,500**

145

**A WHITE GOLD, EMERALD AND DIAMOND BYPASS RING**

centering two pear shaped mixed-cut emeralds weighing approximately 1.45cts; mounted in 14k gold; ring size: 6 1/2

**\$1,000 - 1,500**

**PROPERTY FROM A NORTHERN CALIFORNIA ESTATE**



146



147



149



148

146

**A PAIR OF BLACKENED GOLD AND DIAMOND HOOP EARRINGS**

*mounted in 18k blackened gold; estimated total diamond weight: 1.70cts; earring dimensions: 3 x 2in.*

**\$1,500 - 2,000**

147

**A PLATINUM AND DIAMOND LINE BRACELET**

*mounted in platinum; estimated total diamond weight: 8.35cts; bracelet length: 7 1/4in.*

**\$7,000 - 9,000**

148

**A PAIR OF WHITE GOLD AND DIAMOND FLOWER-FORM EAR PENDANTS**

*mounted in 18k white gold; estimated total diamond weight: 6.60cts; ear pendant dimensions: 2 x 1/2in.*

**\$3,500 - 4,500**

149

**A PLATINUM AND DIAMOND ETERNITY BAND**

*mounted in platinum; estimated total diamond weight: 4.95cts; ring size: 6 3/4*

**\$2,500 - 3,500**



150

**150  
A COLLECTION OF THREE DIAMOND HINGED-BANGLE BRACELETS**

*mounted in blackened sterling silver and 14k gold; estimated total diamond weight: 4.50cts; gross weight approximately: 89 grams; bracelet lengths: 6 3/4in.*

**\$800 - 1,200**

**151  
A CULTURED PEARL, SAPPHIRE AND DIAMOND SNAKE RING**

*centering a baroque cultured pearl measuring approximately 17.90 x 16.30 x 16.35mm; mounted in black rhodium plated 18k white gold; estimated total diamond weight: 2.85cts; gross weight approximately: 29 grams; size: 7*

**\$4,000 - 6,000**

152

**152  
A ROSE-CUT DIAMOND WIDE BRACELET**

*mounted in blackened sterling silver and 14k gold; estimated total diamond weight: 8.60cts; gross weight approximately: 100 grams; bracelet length: 7 1/4in.*

**\$4,000 - 7,000**

**153  
A PAIR OF WHITE GOLD AND DIAMOND EAR CLIPS, CANTAMESSA**

*mounted in 18k white gold; estimated total diamond weight: 2.65cts; ear clip diameter: 1in.; signed: Cantamesa*

**\$1,800 - 2,200**

**154  
A PAIR OF WHITE GOLD DIAMOND 'TORQUE BEAD' EAR PENDANTS, FRANK GEHRY FOR TIFFANY & CO.**

*mounted in 18k white gold; ear pendant drop: 2 7/8in.; signed: T & Co Gehry*

**\$1,800 - 2,200**





155



156



157



158

155

**A WHITE GOLD AND DIAMOND BOMBE RING**

*mounted in 14k white gold; estimated total diamond weight: 3.00cts; ring size: 7*

**\$1,200 - 1,500**

156

**A TWO TONE 'ROADSTER' WATCH, CARTIER**

*quartz movement; mounted in 18k gold and stainless steel, gross weight approximately: 94 grams; bracelet length: 6 1/4in.; signed: Cartier; numbered: 2675*

**\$3,000 - 5,000**

157

**A COLLAR NECKLACE WITH EMERALD CENTER, BULGARI**

*centering an oval shaped cabochon-cut emerald weighing approximately 16.40cts; mounted in stainless steel and 18k gold; gross weight approximately: 92 grams; necklace length: 16in.; signed: Bulgari*

**\$3,000 - 5,000**

158

**A WHITE GOLD AND DIAMOND ILLUSION SET RING**

*mounted in 18k white gold; ring size: 6 1/2*

**\$1,500 - 2,000**



159



163



161



160



162

159

**A WHITE GOLD AND DIAMOND BANGLE BRACELET**

centering mixed-cut diamonds weighing a total of approximately 2.15cts; mounted in 18k white gold; estimated remaining diamond weight: 3.95cts; gross weight approximately: 29 grams; bracelet length: 6 1/2in.

**\$3,000 - 5,000**

160

**A PLATINUM AND DIAMOND ETERNITY BAND**

mounted in platinum; estimated total diamond weight: 4.50cts; ring size: 6 1/2

**\$4,500 - 5,500**

161

**A PAIR OF WHITE GOLD AND DIAMOND HALO EARRINGS**

centering a pair of round brilliant-cut diamonds weighing approximately 2.00cts; mounted in 18k white gold; estimated remaining diamond weight: 0.30ct; earring diameter: 3/8in.

**\$1,800 - 2,200**

162

**AN OPAL AND DIAMOND RING**

centering an oval shaped opal weighing approximately: 8.20cts; surrounded by fourteen round brilliant-cut diamonds; estimated total diamond weight: 2.80cts; mounted in 18k white gold; ring size: 6 1/4

**\$2,000 - 3,000**

**PROPERTY OF A CALIFORNIA LADY**

163

**AN EMERALD AND DIAMOND RING**

centering a rectangular step-cut emerald, measuring approximately 10.49 x 9.61 x 5.15mm; mounted in 14k white gold; estimated total diamond weight: 1.25cts; size: 6 1/2

**\$6,000 - 8,000**



165



164



166



167

164

**A DIAMOND THREE STONE RING**

*mounted in platinum; estimated total diamond weight: 4.00cts; ring size: 7 3/4*

**\$4,000 - 6,000**

165

**A GOLD, CABOCHON EMERALD, AND DIAMOND RING**

*centering an oval shaped sugarloaf-cut emerald weighing approximately 6.05cts; mounted in 14k white gold; ring size: 6 1/2*

**\$1,000 - 1,500**

166

**A CITRINE, AMETHYST AND DIAMOND BRACELET**

*interspersed with round shaped cabochon-cut amethyst and citrines; mounted in 18k white gold; estimated total diamond weight: 3.65cts; gross weight approximately: 145 grams; length: 7 1/8in.*

**\$8,000 - 10,000**

167

**A PAIR OF WHITE GOLD AND DIAMOND INSIDE/OUT HOOP EARRINGS**

*mounted in 18k white gold; estimated total diamond weight: 4.00cts; earring diameter: 1 1/2in.*

**\$1,800 - 2,200**



168

**PROPERTY FROM AN ORO VALLEY, ARIZONA, LADY**

**168  
A PAIR OF CULTURED PEARL BRACELETS**

*mounted in 14k gold; gross weight approximately: 36 grams; lengths: 6 1/4 and 6 1/2in.*

**\$600 - 800  
To be sold without reserve**

**169  
A GOLD AND DIAMOND FLOWER NECKLACE**

*mounted in 18k gold; estimated total diamond weight: 11.90cts; gross weight approximately: 35 grams; necklace length: 15 3/4in.*

**\$6,000 - 8,000**

170

**170  
A DIAMOND PENDANT NECKLACE AND EAR PENDANTS SET**

*mounted in 18k with a 14k gold chain; chain length: 18in.; ear pendant drop: 1 1/4in.*

**\$800 - 1,200**

171

**171  
A GOLD AND DIAMOND HAREM RING**

*mounted in 18k gold; ring size: 6*

**\$800 - 1,000**



172



173



174



175

**PROPERTY OF A THOUSAND OAKS,  
CALIFORNIA COLLECTOR**

172  
**A GOLD, MABÉ PEARL AND RUBY OWL  
BROOCH**

*mounted in 18k gold; brooch dimensions: 1 1/2 x 1 9/16in.*

**\$600 - 800**

173  
**A DIAMOND RING TOGETHER WITH A  
PAIR OF DIAMOND STUD EARRINGS**

*ring mounted in 18k white gold, earrings mounted in 20k gold; estimated total diamond weight: 1.65cts; ring size: 5 1/4*

**\$1,300 - 1,800**

174  
**A GRADUATED CULTURED PEARL  
NECKLACE**

*comprising of a strand of golden pearls measuring approximately from 10.00 to 13.91mm; mounted in 18k gold; gross weight approximately: 82 grams; length: 19 1/2in. (pearls untested for origin of color)*

**\$1,500 - 2,000**

175  
**A GOLD AND DIAMOND FLORAL  
BROOCH**

*mounted in 18k gold; estimated total diamond weight: 4.50cts; brooch dimensions: 1 3/4 x 7/8in.; deficient one diamond*

**\$2,500 - 3,500**

# Property from the Lathrop Estate

Lots 176-203



176

176  
**A GOLD, EMERALD, RUBY AND DIAMOND LION BROOCH, CARTIER**  
*mounted in 18k bi-color gold; brooch diameter: 1 1/2 x 1 1/2in.; signed: Cartier; numbered: 205678*

**\$2,000 - 3,000**



177

177  
**A GOLD NECESSAIRE CASE, LATE 19TH CENTURY**  
*fitted with a mirror and hidden pencil; mounted in 14k gold; gross weight approximately: 167 grams; case dimensions: 4 1/2 x 2 1/2in.*

**\$1,800 - 2,200**



178

178<sup>Y</sup>  
**A PAIR OF GOLD AND CORAL LADY BUG EAR CLIPS**  
*centering round shaped cabochon-cut coral; mounted in 18k gold; gross weight approximately: 25 grams; ear clip diameter: 1in.*

**\$1,500 - 2,000**

Please note this item cannot be shipped internationally as it may contain endangered materials.



# Property from the Lathrop Estate

Lots 176-203



180



181



179





182

183

179  
**A GOLD, SAPPHIRE AND DIAMOND BROOCH AND EAR CLIPS**  
 mounted in 18k gold and 14k gold ear clip backs; gross weight approximately: 28 grams; brooch dimensions: 1 3/4 x 1 1/4in.; ear clip diameter: 3/4in.

**\$3,000 - 5,000**

180<sup>Y</sup>  
**A TRIPLE STRAND CORAL BEAD NECKLACE \*RESTRING\***  
 mounted in 14k gold; gross weight approximately: 69 grams; necklace length: 19 1/2in.

**\$1,500 - 2,000**

Please note this item cannot be shipped internationally as it may contain endangered materials.

181  
**A YELLOW GOLD WRISTWATCH TOGETHER WITH A WHITE GOLD WRISTWATCH, OMEGA AND ALEMANN MONTREUX**  
 manual wind movements; mounted in 14k yellow and 14k white gold; gross weight approximately: 38 grams; Case diameter: 13mm; Omega length: 6 1/2in.; Alemann length: 6 1/4in.; signed: Omega and Alemann montreux

**\$400 - 600**  
 To be sold without reserve

182  
**A COLLECTION OF GOLD, DIAMOND AND CULTURED PEARL DRESS CLIPS AND GOLD EAR CLIPS**  
 mounted in 14k gold; gross weight approximately: 63 grams

**\$1,200 - 1,500**

183  
**A GOLD AND CULTURED PEARL DEMI-PARURE IN A GRAPE MOTIF, MING'S**  
 mounted in 14k gold; gross weight approximately: 91 grams; bracelet length: 6 3/4in.; brooch dimensions: 2 1/2 x 1 1/2in.; ear clip dimensions: 1 1/4 x 3/4in.; signed: Ming's

**\$800 - 1,000**

# Property from the Lathrop Estate

Lots 176-203



184



185

184

## A PINK ENGINE TURNED ENAMEL COMPACT TOGETHER WITH A FLORAL PINK ENAMEL COMPACT

*mounted in silver; gross weight approximately: 145 grams; engine turned compact diameter: 2 5/8in.; floral enamel diameter: 2 5/8in.*

\$400 - 600

To be sold without reserve

185<sup>Y</sup>

## A COLLECTION OF GOLD AND COLORED STONE BROOCHES

*including amethyst, moonstone, citrine, and coral; mounted in 18k and 14k gold; gross weight approximately: 49 grams*

\$800 - 1,000



186

186  
**A NECKLACE, A PAIR OF EAR CLIPS AND TWO BROOCHES,  
 BY GEORG JENSEN TOGETHER WITH A POWDER COMPACT**  
 comprised of a 'Tulip' necklace, brooch, and ear clips as well as a  
 dove brooch; *mounted in sterling silver; gross weight approximately:*  
*124 grams; necklace length: 16 1/4in.; ear clip dimensions: 7/8*  
*x 1/2in.; tulip brooch dimensions: 1 3/4 x 1 1/4in.; bird brooch*  
*dimensions: 1 3/4 x 1 1/4in.; signed: Georg Jensen; numbered: 66,*  
*100, 320*

**\$1,500 - 2,000**

# Property from the Lathrop Estate

Lots 176-203





191



192



193

187

**A GROUP OF TWO BLUE ENAMEL COMPACTS**

blue and white engine turned enamel compact set with blue zircon weighing approximately 2.10cts, blue engine turned enamel compact with elephant motif; mounted in sterling silver and silver; gross weight approximately: 159 grams; zircon compact dimensions: 3 x 3 1/8in., elephant compact diameter: 2 1/4in.

**\$600 - 800**

To be sold without reserve

188

**A GRADUATED NATURAL PEARL NECKLACE**

mounted in platinum; necklace length: 20in.

**\$2,000 - 3,000**

please see department for copy of GIA report.

189

**A COLLECTION OF FOUR BAR BROOCHES**

mounted in 14k gold, sterling silver, and platinum; estimated total diamond weight: 2.35cts

**\$800 - 1,000**

deficient one sapphire

190

**A GOLD AND DIAMOND LAPEL WATCH AND GOLD WRISTWATCH**

mounted in 18k gold; gross weight approximately: 29 grams; lapel watch case diameter: 22mm, wristwatch diameter: 24mm; deficient one diamond

**\$800 - 1,000**

191

**A TURN OF THE CENTURY CARVED ROCK CRYSTAL, AQUAMARINE AND DIAMOND BROOCH**

centering a rectangular step-cut aquamarine weighing approximately 1.20cts; mounted in platinum; brooch dimensions: 1 1/4 x 1in.

**\$1,000 - 1,500**

192

**AN ART DECO PLATINUM AND DIAMOND WRISTWATCH, VACHERON AND CONSTANTIN**

mounted in platinum; estimated total diamond weight: 2.30cts; gross weight approximately: 33 grams; watch strap length: 6in.

**\$3,000 - 5,000**

193

**A SAPPHIRE AND DIAMOND RING**

centering a sugarloaf-cut sapphire; mounted in platinum and 14k gold; ring size: 6

**\$2,000 - 3,000**

Please see department for copy of GIA report.

# Property from the Lathrop Estate

Lots 176-203



194

194

## **AN ANTIQUE GOLD MESH PURSE**

*mounted in 14k gold; gross weight approximately: 138 grams; purse dimensions: 6 1/2 x 5 1/2in.*

**\$1,200 - 1,500**

195

## **A GOLD AND ENAMEL POCKET WATCH TOGETHER WITH A GOLD POCKET WATCH**

*both manual wind movements; mounted in 14k gold; gross weight approximately: 44 grams; enamel case diameter: 24mm, elgin case diameter: 34mm*

**\$600 - 800**

**To be sold without reserve**



196

196

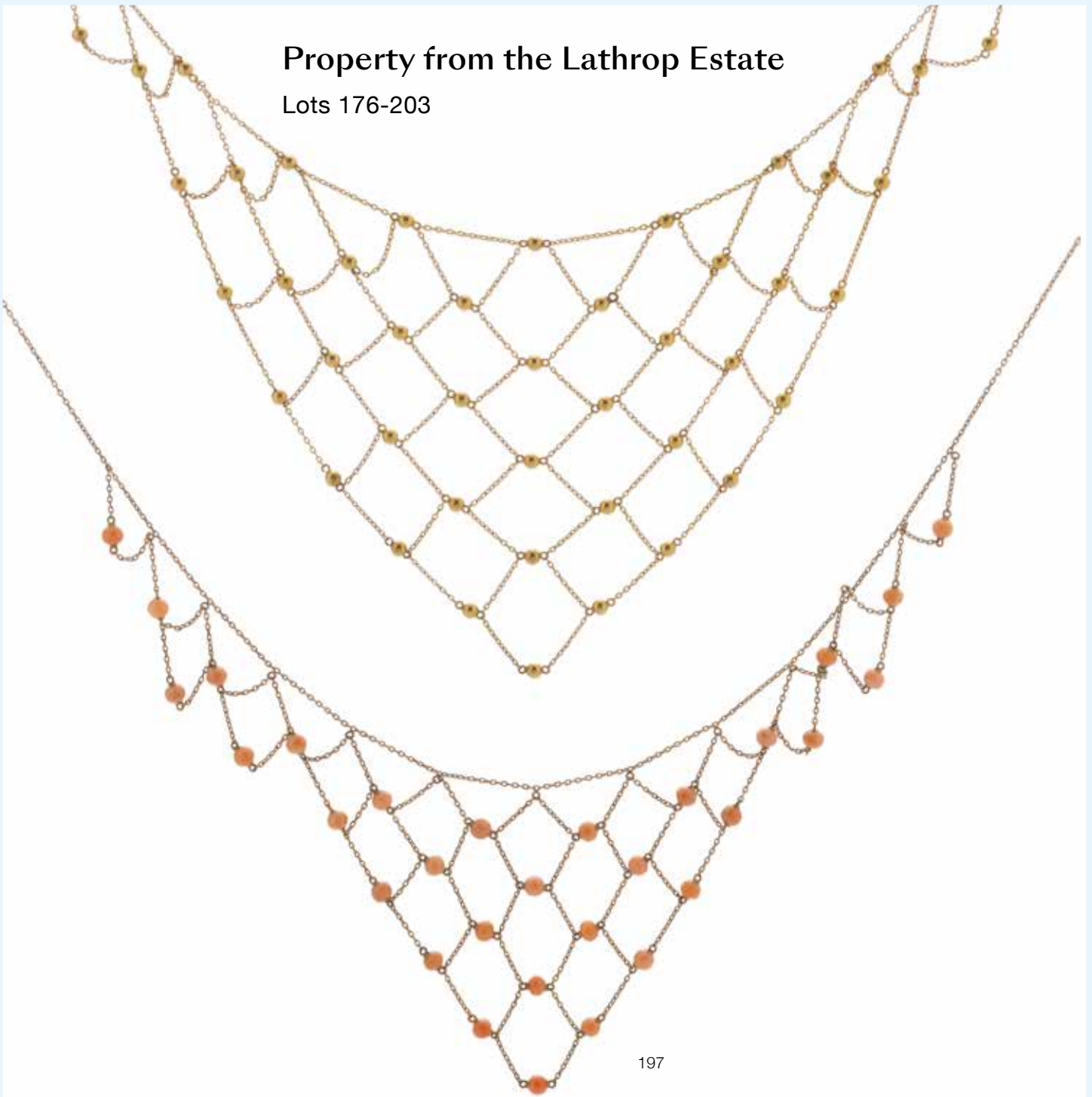
**A GOLD AND EMERALD NECKLACE  
AND EAR PENDANT SET, GEORGIAN**

*mounted in gold; gross weight approximately:  
77 grams; necklace length: 17in.; ear  
pendant drop: 3in.*

**\$3,000 - 5,000**

## Property from the Lathrop Estate

Lots 176-203



197

197<sup>Y</sup>

### **TWO CORAL BEAD BIB NECKLACE AND GOLD BEAD BIB NECKLACE**

*mounted in 14k gold; necklace lengths; 14 1/2in.*

**\$200 - 300**

**To be sold without reserve**

Please note this item cannot be shipped internationally as it may contain endangered materials.

198

### **AN ARTS AND CRAFTS DIAMOND, EMERALD AND DEMANTOID GARNET BROOCH**

*set with mixed-cut emeralds and cultured seed pearls; mounted in 14k gold and platinum; estimated total diamond weight: 3.00cts; brooch diameter: 1 5/8 x 1 1/2in.*

**\$4,000 - 7,000**

199

### **AN ARTS AND CRAFTS GOLD, CULTURED PEARL AND GARNET NECKLACE**

*centering an oval shaped garnet weighing approximately 3.35cts; mounted in gold; necklace length: 17 1/2in.*

**\$800 - 1,000**





198



199



200



201

200<sup>Y</sup>  
**AN ARTS AND CRAFTS GOLD AND CORAL NECKLACE**

centering an oval shaped cabochon-cut coral and drop; *mounted in gold; necklace length: 18in.*

**\$600 - 800**  
**To be sold without reserve**

Please note this item cannot be shipped internationally as it may contain endangered materials.

201  
**A GOLD CIGARETTE CASE, ENGLISH**

*mounted in 9k gold; gross weight approximately: 111 grams; case dimensions: 3 1/2 x 3 3/8in.*

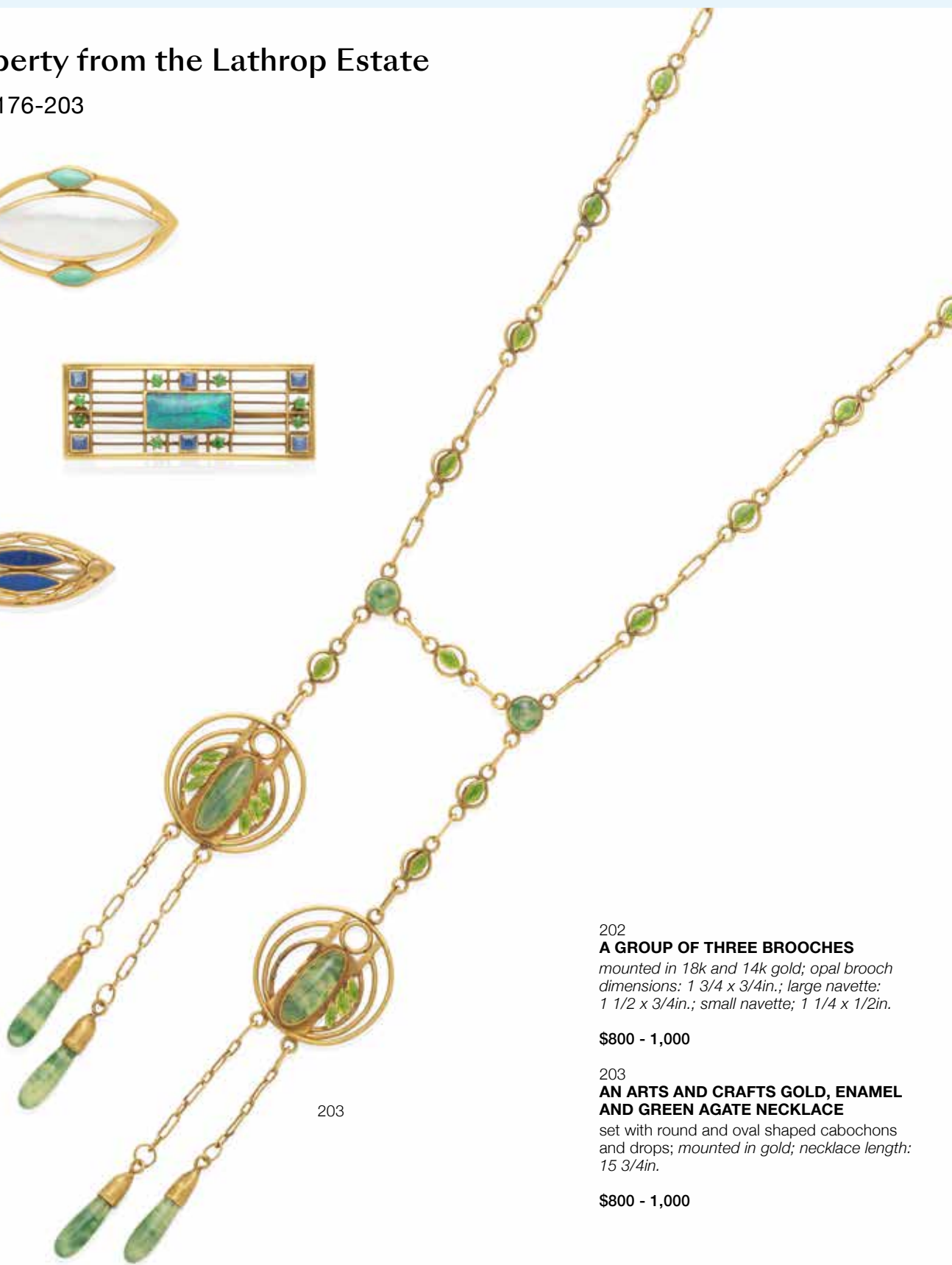
**\$1,200 - 1,500**

# Property from the Lathrop Estate

Lots 176-203



202



203

202

## A GROUP OF THREE BROOCHES

mounted in 18k and 14k gold; opal brooch dimensions: 1 3/4 x 3/4in.; large navette: 1 1/2 x 3/4in.; small navette; 1 1/4 x 1/2in.

\$800 - 1,000

203

## AN ARTS AND CRAFTS GOLD, ENAMEL AND GREEN AGATE NECKLACE

set with round and oval shaped cabochons and drops; mounted in gold; necklace length: 15 3/4in.

\$800 - 1,000



# Session Two

Lots 204-417  
2pm







204

208

207

206

205

204

**A WHITE GOLD, DIAMOND, AND EMERALD RING**

centering a rectangular step-cut emerald weighing approximately 1.50cts; mounted in 14k white gold; ring size: 5

**\$1,800 - 2,500**

205

**A LADY'S ZENITH DIAMOND COCKTAIL WATCH**

manual wind, 17 jewels; mounted in platinum; estimated total diamond weight: 1.15cts; gross weight approximately: 26 grams; bracelet length: 7 1/4in.

**\$400 - 600**

206

**A DIAMOND AND SYNTHETIC SAPPHIRE BRACELET**

mounted in platinum; estimated total diamond weight: 3.25cts; gross weight approximately: 25 grams; bracelet length: 7in.

**\$1,500 - 2,000**

207

**A LADY'S DIAMOND COCKTAIL WATCH, AUDEMARS PIGUET FOR TIFFANY & CO.**

manual wind; mounted in 14k white gold; bracelet length: 7in.; signed: Audemars Piguet & Tiffany & Co.

**\$400 - 600**

208

**A PAIR OF WHITE GOLD, SAPPHIRE AND DIAMOND EAR PENDANTS**

mounted in 14k white gold; estimated total diamond weight: 1.20cts; ear pendant drop: 2 1/4in.

**\$1,200 - 1,500**

209

**A PAIR OF PLATINUM DIAMOND EAR CLIPS**

mounted in platinum; estimated total diamond weight: 6.50cts; ear clip dimensions: 7/8 x 1 1/32in.

**\$3,500 - 4,500**

210

**A PLATINUM AND DIAMOND NECKLACE**

mounted in platinum; estimated total diamond weight: 3.50cts; necklace length: 24 1/2in.

**\$2,000 - 3,000**

211

**A CULTURED PEARL NECKLACE WITH DIAMOND CLASP**

mounted in 18k white gold; gross weight approximately: 26 grams; necklace length: 24 1/4in.

**\$800 - 1,200**

To be sold without reserve

212

**A SAPPHIRE AND DIAMOND BARRETTE**

mounted in platinum; estimated total diamond weight: 1.25cts; barrette dimensions: 2 3/4 x 1/4in.

**\$3,000 - 5,000**



209

210



211



212



214



215



216



213

213  
**A WHITE GOLD AND DIAMOND BRACELET**

*mounted in 14k white gold; estimated total diamond weight: 2.40cts; bracelet length: 7 1/2in.; deficient one diamond*

**\$1,200 - 1,800**

214  
**A PAIR OF WHITE GOLD AND DIAMOND EAR PEDNANTS**

*mounted in 18k white gold; estimated total diamond weight: 1.95cts; ear pendant dimensions: 1 x 1/2in.*

**\$800 - 1,000**

215  
**A PLATINUM, DIAMOND AND SAPPHIRE RING**

*centering round brilliant-cut diamonds weighing approximately 1.40, .55 and .50cts; mounted in platinum; ring size: 7 1/4*

**\$2,500 - 3,500**

216  
**A SAPPHIRE, DIAMOND AND 14K BI-COLOR GOLD NECKLACE**

*oval double cabochon sapphire approximately: 7.78 x 6.93 x 5.47mm; estimated total diamond weight: 1.45cts; length: 19 1/4in.*

**\$2,000 - 3,000**

217  
**A WHITE GOLD AND DIAMOND WATCH**

*manual wind movement; mounted in 14k white gold; estimated total diamond weight: 1.10cts; watch length: 6 1/4in.*

**\$600 - 800**





217



218



219

220

**PROPERTY FROM A NEW YORK ESTATE**

**218  
A CULTURED PEARL AND DIAMOND  
PIN, CIRCA 1900**

cultured pearls measuring approximately: 3.8 to 6.5mm; mounted in platinum and silver; estimated total diamond weight: 1.70cts; dimensions: 1 3/4 x 1 1/4in.

**\$1,200 - 1,500**  
To be sold without reserve

**PROPERTY FROM AN ORO VALLEY,  
ARIZONA, LADY**

**219  
A DIAMOND RING**

centering a pear-shaped brilliant-cut diamond weighing 1.67cts and measuring 9.66 x 6.93 x 4.15mm; mounted in platinum; size: 6 1/4

**\$5,000 - 7,000**

Accompanied by GIA report #2203730317, dated November 13, 2019, stating the Diamond as: D color, VS1 clarity

**PROPERTY OF AN ARIZONA LADY**

**220  
A FLORAL-FORM DIAMOND NECKLACE**

mounted in 14k white gold; estimated total diamond weight: 2.60cts; gross weight approximately: 35 grams; length: 17 3/4in.

**\$2,000 - 3,000**



221

**221**  
**AN AQUAMARINE AND DIAMOND RING**  
 centering a rectangular step-cut aquamarine measuring approximately 19.43 x 13.11 x 10.36mm; mounted in platinum; size: 6 1/2

**\$1,800 - 2,200**



222

**222**  
**A PLATINUM AND DIAMOND BAND**  
 mounted in platinum; known diamond weight: 7.44cts; ring size: 6 3/4

**\$15,000 - 20,000**

**223**  
**A PLATINUM, SEED PEARL AND DIAMOND NECKLACE, FRANCE, CIRCA 1905**  
 the kite-shaped front suspending a ribbon bow and pendant of openwork design, millegrain-set with old European and single-cut diamonds, to a lattice-work seed pearl chain with diamond openwork clasp; no. 5936, with maker's mark and French assay marks; estimated total diamond weight: 8.80 carats; mounted in platinum; length: 12 3/4 in.

**\$10,000 - 15,000**



225



224

**224**  
**A PAIR OF PLATINUM AND DIAMOND EAR CLIPS**  
 mounted in platinum; estimated total diamond weight: 2.05cts; ear clip dimension: 7/8 x 1/2 in.

**\$1,200 - 1,500**

**225**  
**A PLATINUM, OPAL AND DIAMOND RING**  
 centering a round shaped opal with a known weight of 5.43cts; mounted in platinum; known diamond weight: 1.33cts; ring size: 6 1/4

**\$4,000 - 6,000**



226



227

228



229

230



231

226

**A PLATINUM AND DIAMOND RING**

centering a square radiant-cut diamond weighing approximately 1.55cts; mounted in platinum; estimated remaining diamond weight: 0.30ct; ring size: 3 1/2

**\$3,500 - 4,500**

227

**A JADE AND DIAMOND RING**

centering a rectangular low cabochon-cut jade measuring approximately 18.56 x 12.38 x 3.08mm; mounted in 18k white gold; size: 9 1/2

**\$1,000 - 1,500**

See department for jade report

228

**A PAIR OF WHITE GOLD AND DIAMOND HOOP EARRINGS**

mounted in 14k white gold; estimated total diamond weight: 1.80cts; earring diameter: 7/8in.

**\$1,000 - 1,500**

229

**A WHITE GOLD DIAMOND FLOWER NECKLACE**

mounted in 14k white gold; estimated total diamond weight: 2.95cts; necklace length: 18in.

**\$1,500 - 2,000**

230

**A WHITE GOLD AND DIAMOND LINE BRACELET**

mounted in 14k white gold; estimated total diamond weight: 2.00cts; bracelet length: 7 1/2in.

**\$1,000 - 1,500**

231

**A SAPPHIRE, EMERALD, AND DIAMOND FLOWER BROOCH**

mounted in 18k white gold; estimated total diamond weight: 1.60cts; brooch diameter: 1 21/32in.

**\$2,500 - 3,500**



232

232

**A PAIR OF SNAKE EARRINGS**

*mounted in platinum; estimated total diamond weight: 3.25cts; ear pendant dimensions: 3/4 x 2 3/4in.; deficient one diamond*

**\$2,000 - 3,000**

233

233

**A PLATINUM AND DIAMOND NECKLACE**

*mounted in platinum, estimated total diamond weight: 12.85cts; gross weight approximately: 29 grams; necklace length: 16 1/2in.*

**\$7,000 - 10,000**

235

235

**A PAIR OF OPAL, TOURMALINE AND DIAMOND EAR PENDANTS**

*mounted in 18k white gold; gross weight approximately: 25 grams; ear pendant dimensions: 3 x 7/8in.*

**\$1,500 - 2,000**

234

**A CABOCHON EMERALD AND DIAMOND RING-DANT**

*centering an oval shaped cabochon-cut emerald weighing approximately 12.70cts; mounted in platinum; estimated total diamond weight: 1.80cts; ring size: 3*

**\$3,000 - 5,000**



238

239



236



240



237

236

**A WHITE GOLD AND DIAMOND BAND, PALMIERO**

*mounted in 18k white gold; estimated total diamond weight: 4.30cts; gross weight approximately 31 grams; ring size: 7 3/4; signed: Palmiero*

**\$3,500 - 5,500**

**PROPERTY OF A THOUSAND OAKS, CALIFORNIA COLLECTOR**

237

**A WHITE GOLD AND DIAMOND BRACELET**

*mounted in 18k white gold; estimated total diamond weight: 4.50cts; bracelet length: 6 3/4in.*

**\$3,000 - 5,000**

238

**AN ART DECO PLATINUM, EMERALD, AND DIAMOND BROOCH**

*centering a rectangular step-cut emerald weighing approximately 4.90cts; mounted in platinum; brooch dimensions: 1 1/4 x 1/2in.*

**\$1,200 - 1,800**

239

**A WHITE GOLD, DIAMOND, AND A CULTURED SOUTH SEA PEARL NECKLACE**

*centering a cultured south sea pearl measuring approximately 14.00mm; mounted in 18k white gold; estimated total diamond weight: 11.65cts; gross weight approximately: 61 grams; necklace length: 14 3/4in.*

**\$4,000 - 7,000**

**PROPERTY OF A DISTINGUISHED SCOTTISH FAMILY**

240

**A PLATINUM, EMERALD AND DIAMOND RING**

*centering a rectangular emerald-cut emerald weighing approximately 4.65cts; mounted in platinum; estimated total diamond weight: 2.15cts; ring size: 8*

**\$10,000 - 15,000**

Accompanied by AGL report #1106383, dated 29 January, 2020, stating the Emerald as: natural beryl, with minor clarity enhancement



241



242



243



244



245

**241  
A GOLD AND DIAMOND BOMBE RING**

*mounted in 18k rose gold; known total diamond weight: 10.42cts; gross weight approximately: 32 grams; ring size: 8 1/4*

**\$7,000 - 10,000**

**242  
A PAIR OF TRI-COLOR GOLD, COLORED DIAMOND AND DIAMOND EAR PENDANTS**

*mounted in tri-color 18k gold; estimated total diamond weight: 1.60cts; ear pendant dimensions: 1 1/4 x 1/4in.*

**\$1,800 - 2,200**

Colored diamonds untested for origin of color

**243  
A DOUBLE STRAND CULTURED PEARL NECKLACE WITH DIAMOND CLASP**

*mounted in 14k white gold; gross weight approximately: 77 grams; necklace length: 22 3/4in.*

**\$1,500 - 2,000**

**244  
A GOLD, MULTICOLOR JADE AND DIAMOND PENDANT / BROOCH**

*mounted in 18k rose gold; brooch dimensions: 2 x 1 1/4in.*

**\$1,000 - 15,000**

**245  
AN EMERALD AND DIAMOND RING**

*centering a rectangular step-cut emerald measuring approximately 9.54 x 6.98 x 5.04mm; mounted in 18k and platinum; size: 6 1/2*

**\$2,000 - 3,000**



247



248



246



249

**PROPERTY FROM A NEW MEXICO ESTATE**

246  
**A TRIO OF SAPPHIRE ETERNITY BANDS**  
*mounted in blackened gold; rings sized: 5 1/2 to 6 1/2*

**\$1,000 - 1,500**

247  
**A DIAMOND PENDANT NECKLACE TOGETHER WITH A PENDANT, ATELIER MINYON**  
*mounted in sterling silver and 24k gold; gross weight approximately: 72 grams; necklace length: 31 1/2in.; signed: Atelier Minyon*

**\$800 - 1,000**

248  
**A DIAMOND AND COLORED STONE BUTTERFLY BROOCH, FRANCE**  
*mounted in blackened 18k gold; estimated total diamond weight: 21.30cts; dimensions: 3 1/4 x 3in.; with French marks*

**\$10,000 - 15,000**

249  
**A WHITE GOLD AND RUBY RING**  
*mounted in 18k white gold; ring size: 6*

**\$800 - 1,000**



254

253

251

252

250





255

**PROPERTY OF A THOUSAND OAKS,  
CALIFORNIA COLLECTOR, LOTS 250-254**

**250  
A GOLD AND COLORED STONE BEAD  
NECKLACE AND EAR CLIP SET**

including quartz and tourmaline measuring from approximately 7.65 to 11.05mm; mounted in 14k gold; gross weight approximately: 66 grams; necklace length: 16in.; ear pendant dimensions: 1/4 x 1 1/4in.

**\$800 - 1,000**

**251  
A GOLD, DIAMOND AND FACETED BEAD  
NECKLACE**

including tourmalinated and rutilated quartz; mounted in 14k gold; gross weight approximately 64 grams; necklace length: 17in.

**\$800 - 1,000**

**252  
A BAROQUE CULTURED PEARL AND  
COLORED DIAMOND NECKLACE**

gross weight approximately: 41 grams; necklace length: 33in.

**\$1,000 - 1,500**

Colored diamonds untested for origin of color

**253  
AN EMERALD BEAD AND DIAMOND  
NECKLACE**

graduated emerald beads measuring approximately 7.40 to 15.34mm; mounted in 14k white gold; gross weight approximately: 53 grams; necklace length: 16 1/2in.

**\$1,500 - 2,000**

**254  
A GOLD AND RUBY BEAD TRIPLE  
STRAND NECKLACE**

dispersed with gold rondelles; mounted in 14k gold; gross weight approximately: 36 grams; necklace length: 15 1/2in.

**\$1,500 - 2,000**

**255  
A PAIR OF TWO BLACK CHAIN LINK  
NECKLACES, CHANEL**

a double layer plastic and vinyl necklace, together with a mixed-link chain; mounted in base metal; necklace lengths: 25 and 40in.; signed: Chanel

**\$600 - 1,000**



256



258



260



257



259

**PROPERTY OF AN ARIZONA LADY**

256  
**A PAIR OF DIAMOND EAR PENDANTS**  
*mounted in 14k white gold; dimensions: 2 5/8 x 2 5/8in.*

**\$800 - 1,000**

257  
**A PAVÉ DIAMOND EAGLE RING**  
*mounted in 18k white gold; estimated total diamond weight: 3.00cts; size: 7 1/4; deficient one diamond*

**\$1,000 - 1,500**

258  
**A WHITE GOLD, DIAMOND AND RUBY RING**  
*mounted in 18k white gold; total known diamond weight: 1.50cts; ring size: 7*

**\$1,500 - 2,000**

259  
**A WHITE GOLD AND DIAMOND BAND**  
*decorated with pavé diamond heart motifs; mounted in 18k white gold; ring size: 7 3/4*

**\$900 - 1,200**

260  
**A STAINLESS STEEL AND DIAMOND SET WRISTWATCH**  
*automatic movement; mounted in stainless steel; estimated total diamond weight: 4.05cts; gross weight approximately: 128 grams; case diameter: 38mm; bracelet length: 7in.*

**\$4,000 - 5,000**

261  
**A WHITE GOLD, AMETHYST, AND DIAMOND FISH BROOCH**  
*centering an oval shaped cabochon-cut amethyst weighing approximately 23.05cts; mounted in 14k white gold; brooch dimensions: 1 3/4 x 1 5/16in.*

**\$800 - 1,000**

262  
**A PAIR OF DIAMOND SLICE NECKLACES**  
*mounted in 18k gold and 18k white gold; white gold necklace length: 28in.; yellow gold necklace length: 29in.*

**\$1,500 - 2,000**



261



263



264

262

263

**A PLATINUM AND DIAMOND RING**

centering a round brilliant-cut diamond weighing approximately 5.00cts; *mounted in platinum; estimated remaining diamond weight: 0.75cts; ring size: 6 1/4*

**\$15,000-20,000**

Accompanied by GIA report #2205929525, dated February 19, 2020, stating the Diamond as: L color, V12 clarity.

264

**A PLATINUM, SAPPHIRE, AND DIAMOND RING**

centering an oval shaped cabochon-cut sapphire weighing approximately 2.55cts; *mounted in platinum; estimated total diamond weight: 1.20cts; ring size: 6 1/2*

**\$1,200 - 1,800**



265 (Showing lot 265 color change)



266



268



267

**PROPERTY FROM A NEW MEXICO ESTATE**

**265  
A ROSE GOLD AND COLOR CHANGE GARNET BRACELET,  
POMELLATO**

*mounted in 18k rose gold; gross weight approximately: 45 grams;  
bracelet length: 7 1/2in.; signed: Pomellato*

**\$5,000 - 7,000**

**266  
A WHITE GOLD AND COLORED DIAMOND FACE RING,  
GARAVELLI**

*mounted in blackened 18k white gold; estimated total diamond  
weight: 2.50cts; ring size: 7 1/4; signed: Garavelli*

**\$3,000 - 5,000**

Colored diamonds untested for origin of color

**267  
A DIAMOND AND COLORED DIAMOND LIZARD BROOCH,  
ITALY**

*mounted in blackened 18k white gold; estimated total diamond  
weight: 22.00cts; brooch dimensions: 2 x 4 1/8in.*

**\$3,000 - 5,000**

Colored diamonds untested for origin of color

**268  
A GOLD, DIAMOND AND RUBY SNAKE RING**

*mounted in 14k gold; estimated total diamond weight: 1.25cts; ring  
size: 7 1/2*

**\$2,000 - 3,000**



269



271



270



272

**PROPERTY FROM THE ESTATE OF MADELINE VAN EERDE**

269

**A GOLD, RUBY AND DIAMOND BROOCH AND EAR CLIP SET**

*mounted in 18k gold; gross weight approximately: 46 grams; brooch dimensions: 2 1/4 x 1 1/2in.; ear clip dimensions: 1 3/8 x 3/4in.*

**\$1,500 - 2,000**

270

**A 14K ROSE GOLD, PALLADIUM, DIAMOND AND RUBY RING, CIRCA 1940**

*mounted in 14k rose gold and palladium; ring size: 6 1/2*

**\$1,000 - 1,500**

271

**A PAIR OF GOLD, DIAMOND, AND CABOCHON RUBY EAR CLIPS, AND A GOLD, DIAMOND, AND RUBY RING, BORIS LEBEAU**

*mounted in 18k bi-color gold; gross weight approximately: 42 grams; ring size: 5; ear clip dimensions: 7/8 x 5/8in.; signed: Boris LeBeau*

**\$2,500 - 3,500**

272

**A PAIR OF RUBY AND DIAMOND EAR CLIPS**

*mounted in 18k white gold; estimated total diamonds weight: 6.00cts; gross weight approximately: 39 grams; ear clip diameter: 1 1/4in.*

**\$5,500 - 6,500**



273

**273  
A PAIR OF DIAMOND DROP EAR  
PENDANTS**

*mounted in sterling silver; estimated total  
diamond weight: 1.00ct; ear pendant drop:  
3 1/4in.*

**\$800 - 1,200**  
To be sold without reserve



274

**274  
A PAIR OF CHRYSOPRASE AND  
DIAMOND EAR PENDANTS**

*mounted in blackened sterling silver;  
estimated total diamond weight: 1.75cts;  
ear pendant drop: 2 3/8 x 3/4in.*

**\$1,000 - 1,500**

**275  
A DIAMOND STATION NECKLACE**

*mounted in blackened sterling silver;  
estimated total diamond weight: 2.45cts;  
necklace length: 37 3/4in.*

**\$800 - 1,200**  
To be sold without reserve



275



276

**276  
A RHODOLITE GARNET HINGED  
BANGLE BRACELET**

*mounted in blackened sterling silver; gross  
weight approximately: 90 grams; bracelet  
length: 7in.*

**\$800 - 1,200**  
To be sold without reserve



277

**277  
A PAIR OF TURQUOISE AND DIAMOND  
EAR PENDANTS**

*mounted in 18k blackened gold; estimated total diamond weight: 1.45cts; ear pendant dimensions: 7/8 x 2 3/4in.*

**\$1,200 - 1,500**

278

**278  
A DRUZY QUARTZ AND DIAMOND  
PENDANT NECKLACE**

*mounted in sterling silver; estimated total diamond weight: 1.00ct; necklace length: 24in.*

**\$800 - 1,200**  
**To be sold without reserve**

**279  
A DIAMOND TASSEL NECKLACE**  
*mounted in 14k gold and blackened sterling silver; estimated total diamond weight: 2.50cts; gross weight approximately: 28 grams; necklace length: 25 3/4in.*

**\$800 - 1,200**  
**To be sold without reserve**

280

**280  
A DIAMOND PENDANT WITH CHAIN**

*mounted in blackened sterling silver; necklace length: 24in.*

**\$800 - 1,200**  
**To be sold without reserve**

281

**281  
A PAIR OF SAPPHIRE EAR PENDANTS**

*mounted in sterling silver; ear pendant drop: 2 5/8in.*

**\$800 - 1,200**  
**To be sold without reserve**



283



282



284

**PROPERTY FROM A NEW MEXICO ESTATE**

282  
**A YELLOW BERYL AND DIAMOND RING**  
centering a square shaped cabochon-cut yellow beryl with a known weight of 16.08cts; mounted in 18k white gold; ring size: 7 1/2

**\$800 - 1,200**

283  
**A PAIR OF DIAMOND STARBURST EAR PENDANTS**  
mounted in 18k gold and blackened sterling silver; estimated total diamond weight: 3.00cts; ear pendant drop: 1 7/8in.

**\$800 - 1,200**

284  
**A FIRE OPAL BEAD NECKLACE**  
one hundred seventeen faceted opal beads measuring from 5.01 to 9.05mm; fixed to a 22k gold clasp; length: 18in.

**\$1,000 - 1,500**





285



287



286



288

285

**A PAIR OF OPAL AND DIAMOND DROP EAR PENDANTS**

*mounted in sterling silver; estimated total diamond weight: 1.80cts; ear pendant drop: 2 5/8in.*

**\$800 - 1,200**

**To be sold without reserve**

286

**A CARVED TANZANITE AND DIAMOND RING**

*centering a triangle-shaped carved tanzanite measuring approximately 24.67 x 24.57 x 6.10mm; mounted in blackened sterling silver; size: 7*

**\$800 - 1,200**

**To be sold without reserve**

287

**A DIAMOND CIRCLE PENDANT NECKLACE, ROBERTO COIN**

*mounted in 18k white gold; estimated total diamond weight: 1.15cts; necklace length: 18in.*

**\$800 - 1,200**

**To be sold without reserve**

288

**AN EMERALD, OPAL AND DIAMOND NAVETTE RING**

*centering an oval-shaped cabochon-cut emerald with a known weight of 2.45cts, surrounded by pear shaped cabochon-cut opals; mounted in blackened sterling silver; ring size: 7*

**\$800 - 1,200**

**To be sold without reserve**



289



290



292



291

289

**A DIAMOND PENDANT**

*mounted in 14k gold; estimated total diamond weight: 2.50cts; dimensions: 1 7/8 x 1/2in.*

**\$3,000 - 5,000**

**PROPERTY OF A CALIFORNIA LADY**

290

**AN AQUAMARINE AND DIAMOND RING**

*centering a rectangular step-cut aquamarine, measuring approximately 22.45 x 17.93 x 10.38mm; mounted in 18k white gold; estimated total diamond weight: 2.05cts; ring size: 5 1/2*

**\$4,000 - 6,000**



293

291  
**AN AMETHYST, CITRINE AND OPAL NECKLACE**

alternating cabochon-cut amethyst, citrine and moonstone; mounted in 18k white gold; gross weight approximately: 231 grams; length: 34 1/2in.

\$5,000 - 7,000

**PROPERTY OF A LADY**

292  
**A PAIR OF DIAMOND EAR CLIPS**

mounted in 14k gold; estimated total diamond weight: 1.35cts; length: 1 1/4in

\$1,200 - 1,500

293  
**A WHITE GOLD AND DIAMOND BYPASS RING**

mounted in 18k white gold; estimated total diamond weight: 2.45cts; ring size: 6 3/4

\$1,500 - 2,000

294  
**A PAIR OF GOLD, AQUAMARINE AND AMETHYST EAR PENDANTS**

each centering a pear-shaped cabochon-cut aquamarine surrounded by oval shaped amethysts; mounted in 18k gold; gross weight approximately: 42 grams; ear pendant dimensions: 2 3/4 x 1in.

\$1,800 - 2,200



294



295

295  
**A GOLD 'WAVE' NECKLACE, ELSA PERETTI FOR TIFFANY & CO.**

mounted in 18k gold; gross weight approximately: 25 grams; necklace length: 16in.

\$800 - 1,200

To be sold without reserve



296



297



298



299

**PROPERTY OF A PROMINENT  
LOS ANGELES LADY, LOTS 296-304**

296  
**AN AMETHYST AND DIAMOND RING**  
centering an oval shaped brilliant-cut  
amethyst measuring approximately 16.44 x  
11.94 x 7.99mm; mounted in 18k bi-color  
gold; estimated total diamond weight: 1.00ct;  
gross weight approximately: 26 grams; ring  
size: 6

**\$1,000 - 1,500**

297  
**A DIAMOND BYPASS RING**  
mounted in 18k bi-color gold; ring size: 5

**\$800 - 1,000**

298  
**A GOLD AND DIAMOND BRACELET**  
mounted in bi-color 14k gold; estimated  
total diamond weight: 6.40cts; gross weight  
approximately: 94 grams; bracelet length:  
7in.

**\$5,000 - 7,000**

299  
**A GOLD AND DIAMOND CROSSOVER  
BANGLE BRACELET**  
mounted in 18k bi-color gold; estimated  
total diamond weight: 6.65cts; gross weight  
approximately: 44 grams; length: 6 1/4in.

**\$3,000 - 4,000**



301



303



302



300



304

**300  
A DIAMOND AND COLORED STONE  
LION BROOCH**

*mounted in 18k bi-color gold; dimensions:  
1 3/4 x 1in.*

**\$800 - 1,000**

**301  
A DIAMOND AND EMERALD BRACELET**  
*mounted in 18k bi-color gold; gross weight  
approximately: 54 grams; length: 6 1/4in.*

**\$1,500 - 2,000**

**302  
A PAIR OF DIAMOND, SAPPHIRE AND  
EMERALD EAR CLIPS, FRANCE**

*mounted in 18k gold; estimated total  
diamond weight: 1.65cts; dimensions:  
7/8 x 3/4in.; with French assay marks.*

**\$2,000 - 3,000**

**303  
A GOLD, DIAMOND AND COLORED  
STONE BANGLE**

*mounted in 18k gold; estimated total  
diamond weight: 1.80cts; gross weight  
approximately: 79 grams; bracelet length:  
6 1/2in.*

**\$3,000 - 5,000**

**304  
AN EMERALD AND DIAMOND BOMBE  
RING**

*mounted in gold; estimated total diamond  
weight: 1.90cts; ring size: 5*

**\$1,200 - 1,500**

# Property from the Estate of Jessye Norman

Lots 305-313



© Carol Friedman

When it comes to singers, there have been few voices considered as majestic as American soprano Jessye Norman's. She captivated audiences around the globe, performing a wide-range of leading roles in premier opera houses (such as the Metropolitan Opera in New York), and in solo recitals and concerts with the world's preeminent orchestras - building an impressive repertoire from baroque music to modernists, spirituals and jazz. The decorated opera singer from Augusta, Georgia, who began listening to opera on the radio as a child, received numerous awards including forty honorary doctorates, five Grammys including the Lifetime Achievement Award, the Glenn Gould Prize, the National Medal of the Arts, a Kennedy Center Honor, and France's Legion of Honor.

Bonhams is proud to offer a selection of beautiful jewels from the Estate of Jessye Norman, whose formidable presence lives on in her legacy of humanitarian work and the greatness of her voice.



305



306



307



**305  
A GOLD AND DIAMOND  
'PEARLMASTER' WRISTWATCH, ROLEX**

automatic movement; *mounted in 18k gold; estimated total diamond weight: 1.60cts; gross weight approximately: 119 grams; bracelet length: 7 1/2in.; signed: Rolex; numbered: 80298*

**\$4,000 - 6,000**  
To be sold without reserve

**306<sup>Y</sup>  
A PAIR OF CORAL, ONYX AND  
DIAMOND EAR CLIPS, GEORGE  
L'ENFANT, FRANCE**

*mounted in 18k gold and platinum; gross weight approximately: 32 grams; ear clip dimension: 1 1/2 x 1 3/4in.*

**\$1,200 - 1,800**  
To be sold without reserve

Please note this item cannot be shipped internationally as it may contain endangered materials.

**307  
A GOLD AND DIAMOND LAPEL PIN,  
VAN CLEEF & ARPELS**

*mounted in 18k gold; lapel pin dimensions: 3/4 x 4in.; signed: Van Cleef & Arpels; numbered: 40973*

**\$2,000 - 4,000**  
To be sold without reserve

# Property from the Estate of Jessye Norman

Lots 305-313



308



309



310



311

308

## A PLATINUM, MABÉ PEARL AND DIAMOND EAR CLIP AND RING SET

mounted in platinum; estimated total diamond weight: 1.45cts; gross weight approximately: 41 grams; ring size: 8 1/4; ear clip diameter: 1in.

**\$800 - 1,200**

To be sold without reserve

309

## A COLORED CULTURED PEARL, DIAMOND, AND 18K GOLD PENDANT

centering a colored south sea cultured pearl measuring approximately 14.12mm; mounted in 18k bi-color gold; estimated total diamond weight: 2.50cts; pendant dimensions: 1 1/4 x 2 1/4in.; signed: Jewellery Theatre

**\$800 - 1,200**

To be sold without reserve

Pearls untested for origin of color

310

## A PAIR OF WHITE GOLD DIAMOND AND COLORED DIAMOND EAR PENDANTS, DORRIT MOUSSAIEF

mounted in 18k white gold; estimated total white diamond weight: 11.35cts; gross weight approximately: 34 grams; ear pendant dimensions: 2 3/4 x 3in.; signed: Dorrit Moussaief; deficient one colored diamond briolette

**\$2,500 - 4,500**

To be sold without reserve

Colored diamonds untested for origin of color

311

## A GOLD, SAPPHIRE AND DIAMOND RING

centering an oval shaped sapphire weighing approximately 3.70cts; mounted in 18k gold; estimated total diamond weight: 3.20cts; ring size: 7

**\$1,200 - 1,800**

To be sold without reserve





312

313

**312  
A PAIR OF DIAMOND HOOP EARRINGS TOGETHER WITH  
TWO PENDANTS**

comprising a mabé pearl and diamond pendant with a coin pendant;  
mounted in 18k gold; estimated total diamond weight: 4.30cts;  
gross weight approximately: 67 grams; earring dimensions: 1 1/2 x  
1 1/8in.; pearl pendant: 1 5/8 x 3/4in.; coin pendant: 3/4 x 1 1/4in.;  
earrings deficient two diamonds

**\$600 - 1,000**  
To be sold without reserve

**313  
A PAIR OF 'X', DIAMOND EAR CLIPS, PALOMA PICASSO FOR  
TIFFANY & CO, TOGETHER WITH A SEED PEARL TORSADE  
NECKLACE**

mounted in 18k and 14k gold; necklace length: 20in.; ear clip  
dimensions: 1 x 3/4in.; ear clips signed: Paloma Picasso for  
Tiffany & Co

**\$1,200 - 1,800**  
To be sold without reserve



314  
**A PAIR OF GOLD AND SAPPHIRE EARRINGS, CHAUMET**  
 each designed as a cluster of oval and circular-shaped blue, pink, yellow and green sapphires to a gold frame; *signed Chaumet, with French assay marks; accompanied by signed pouch; gross weight approximately: 21.80 grams; mounted in 18k gold; length: 7/8 in.*

**\$2,200 - 2,800**

**PROPERTY OF AN ARIZONA LADY**

315  
**A PAVÉ DIAMOND BRACELET**  
*mounted in 14k bi-color gold; estimated total diamond weight: 9.25cts; gross weight approximately: 34 grams; length: 7 1/4in.*

**\$3,000 - 5,000**

316  
**A GOLD AND DIAMOND BRACELET**  
*mounted in 14k gold; estimated total diamond weight: 2.25cts; bracelet length: 6 7/8in.*

**\$1,000 - 1,500**

317  
**AN OPAL AND DIAMOND RING**  
*centering a rectangular cut-cornered cabochon opal; mounted in 14k gold; ring size: 5 1/2*

**\$1,000 - 1,500**

318  
**A CULTURED PEARL, DIAMOND AND ONYX BROOCH**  
*mounted in 14k gold; gross weight approximately: 67 grams; brooch dimensions: 2 3/4 x 2in.*

**\$1,000 - 1,500**  
**To be sold without reserve**

319  
**A TOPAZ RING, TIFFANY & CO.**  
*centering a round modified brilliant-cut topaz measuring approximately 19.73 x 19.82 x 14.13mm; mounted in 14k gold; size: 6 1/2; signed: Tiffany & Co.; numbered: 1519*

**\$800 - 1,200**  
**To be sold without reserve**

320  
**A GOLD AND TIGER'S EYE NECKLACE**  
*mounted in 14k gold; gross weight approximately: 96 grams; necklace length: 33 grams*

**\$3,000 - 5,000**

321  
**A GOLD, RUBY AND DIAMOND HAREM RING**  
*mounted in 18k gold; ring size: 6 3/4*

**\$1,000 - 1,500**



321

320

319



322



324



325



323



326

**PROPERTY FROM THE ESTATE OF  
MADELINE VAN EERDE**

**322  
A PAIR OF DIAMOND AND SAPPHIRE  
EAR CLIPS BY BORIS LEBEAU  
TOGETHER WITH A PAIR OF DIAMOND  
AND CABOCHON RUBY EAR CLIPS**

*mounted in 18k bi-color gold; estimated total diamond weight: 4.90cts; gross weight approximately: 37 grams; ruby clip dimensions: 5/8 x 1in.; sapphire clip dimensions: 5/8 x 3/4in.; sapphire clips signed: Boris LeBeau*

**\$2,000 - 4,000**

**323  
A GOLD, DIAMOND AND GEMSTONE  
CLOWN BROOCH**

*mounted in 18k bi-colored gold; gross weight approximately: 26 grams; brooch dimensions: 1 1/4 x 2in.*

**\$1,500 - 2,000**

**PROPERTY OF A THOUSAND OAKS,  
CALIFORNIA COLLECTOR, LOTS 324-326**

**324  
A CULTURED PEARL, RUBY AND  
DIAMOND NECKLACE**  
*mounted in 14k gold; gross weight approximately: 28 grams; necklace length: 15 1/4in.*

**\$600 - 800**

**325  
A PAIR OF GOLD, DIAMOND AND  
SAPPHIRE EARCLIPS**  
*mounted in 18k gold; estimated total diamond weight: 4.75cts; ear clip diameter: 1 1/4in.*

**\$3,000 - 5,000**

**326  
A GOLD, CULTURED PEARL AND  
DIAMOND GOAT BROOCH**  
*centering a cultured freshwater pearl measuring approximately 51.94 x 11.71 x 7.13mm; mounted in 18k gold; estimated total diamond weight: 1.35cts; gross weight approximately: 28 grams; brooch dimensions: 3 1/4 x 1in.*

**\$1,000 - 1,500**



327

328

329

**PROPERTY FROM THE ESTATE OF  
MADELINE VAN EERDE, LOTS 327-329**

327  
**A GOLD, DIAMOND, AND CULTURED PEARL RING AND A PAIR OF GOLD, DIAMOND, AND CULTURED PEARL EAR CLIPS**  
*mounted in 14k bi-color gold; estimated total diamond weight: 3.85cts; gross weight approximately: 40 grams; ring size: 3 1/4; ear clip dimensions: 3/4 x 1 1/4in.*

**\$1,200 - 1,800**

328  
**A CULTURED PEARL, DIAMOND, AND GOLD NECKLACE AND A BI-COLOR GOLD, DIAMOND AND CULTURED PEARL RING, BORIS LEBEAU**  
*mounted in 18k bi-color gold; estimated total diamonds weight: 4.40cts; gross weight approximately: 69 grams; necklace length: 16 1/2in.; ring size: 4; ring signed: Boris LeBeau*

**\$1,500 - 2,000**

329  
**A COLLECTION OF GOLD, DIAMONDS AND GEMSTONE RINGS, BORIS LEBEAU**  
*mounted in 18k bi-color gold; estimated total diamonds weight: 2.00cts; gross weight approximately: 35 grams; rings sized: 4 1/4 to 5 1/4; signed: Boris LeBeau*

**\$1,800 - 2,200**



331



330



332



334



333



335

**330  
A PLATINUM, OPAL AND DIAMOND  
RING**

centering an oval-shaped cabochon-cut opal weighing approximately 5.05cts; mounted in platinum; estimated total diamond weight: 1.45cts; ring size: 6 3/4

**\$1,000 - 1,500**

**331  
AN EMERALD AND DIAMOND RING**

centering an oval-shaped cabochon emerald, weighing approximately 9.20 carats, within an ornate openwork round brilliant-cut diamond setting; estimated total diamond weight: 3.05 carats; mounted in 18k white gold; ring size 5

**\$3,500 - 4,500**

**332  
A 14K WHITE GOLD DIAMOND TENNIS  
BRACELET**

mounted in 14k white gold; estimated total diamond weight: 5.45cts; bracelet length: 8in.

**\$4,000 - 8,000**

**333  
A PAIR OF WHITE GOLD AND DIAMOND  
EARRINGS**

centering oval-cut diamonds mounted in 18k white gold; estimated total diamond weight: 3.20cts; earring dimensions: 3/4in.

**\$2,000 - 3,000**

**334  
AN 18K WHITE GOLD DIAMOND  
NECKLACE**

mounted in 18k white gold; estimated total diamond weight: 1.60cts; necklace length: 17in.

**\$1,800 - 2,200**

**335  
A WHITE GOLD AND DIAMOND  
SOLITAIRE PENDANT NECKLACE**

mounted in 14k white gold; necklace length: 18in.

**\$1,000 - 1,500**



337



338



336



339



340

336  
**A PLATINUM AND DIAMOND BAND**  
with pavé diamonds set into the mounting;  
mounted in platinum; estimated total  
diamond weight: 10.75cts; ring size: 6 3/4

**\$25,000 - 35,000**

337  
**A SAPPHIRE AND DIAMOND RING**  
centering an oval-cut sapphire weighing  
approximately 1.50cts; mounted in 18k white  
gold; ring size: 8

**\$1,000 - 1,500**  
To be sold without reserve

338  
**A DIAMOND SOLITAIRE RING**  
mounted in 18k white gold; estimated total  
diamond weight: 1.00ct; ring size: 6 1/4

**\$1,300 - 1,800**

339  
**A WHITE GOLD AND DIAMOND CURB  
LINK NECKLACE**  
mounted in 14k white gold; estimated total  
diamond weight: 8.10cts; gross weight  
approximately: 127 grams; necklace length:  
18 1/2in.; deficient one diamond

**\$8,000 - 10,000**

340  
**A PAIR OF WHITE GOLD DIAMOND  
HOOP EARRINGS**  
mounted in 18k white gold; estimated total  
diamond weight: 4.85cts; earring diameter:  
1 3/8in.

**\$3,500 - 4,500**



343

342

341

344

345

341  
**A WHITE GOLD, ONYX AND DIAMOND RING**

*mounted in 18k white gold; estimated total diamond weight: 1.65cts; ring size: 7*

**\$1,200 - 1,500**

342  
**A WHITE GOLD AND DIAMOND NECKLACE**

*mounted in 18k white gold; estimated total diamond weight: 4.10cts; gross weight approximately: 76 grams; necklace length: 17in.*

**\$3,500 - 4,500**

343  
**A PAIR OF DIAMOND STUD EARRINGS**  
*mounted in 14k white gold; estimated total diamond weight: 2.65cts*

**\$3,000 - 5,000**

344  
**A DIAMOND RING**  
*mounted in platinum; estimated total diamond weight: 3.10cts; ring size: 6 1/2*

**\$2,000 - 3,000**

345  
**A PAIR OF PLATINUM, DIAMOND AND RUBY EAR PENDANTS**  
*centering round brilliant-cut diamonds weighing approximately 1.45 and 1.40cts; mounted in platinum; estimated remaining diamond weight: 1.10cts; ear pendant dimensions: 3/8 x 1 1/2in.*

**\$4,000 - 6,000**





346



349



347



348

346  
**A WHITE GOLD, DIAMOND AND  
SAPPHIRE SWIRL RING**  
*mounted in 18k white gold; estimated total  
diamond weight: 1.80cts; size: 6 1/2*

**\$3,000 - 5,000**

**PROPERTY OF AN ARIZONA  
COLLECTOR**

347  
**A DIAMOND CLUSTER RING**  
*mounted in 14k white gold; estimated total  
diamond weight: 3.95cts; size: 7 3/4*

**\$2,000 - 3,000**

348  
**WHITE GOLD AND DIAMOND BRACELET**  
*mounted in 14k white gold; estimated total  
diamond weight: 2.80cts; bracelet length:  
7in.*

**\$1,000 - 1,500**

**PROPERTY FROM A NORTHERN  
CALIFORNIA ESTATE**

349  
**A PAIR OF TANZANITE AND DIAMOND  
EAR CLIPS**  
*mounted in 18k white gold, estimated total  
diamond weight: 2.65cts; gross weight  
approximately: 27 grams; dimensions: 1 1/4  
x 3/4in.*

**\$1,500 - 2,000**



350

350  
**A GOLD COLLAR NECKLACE TOGETHER WITH A DIAMOND WASP ENHANCER PENDANT**

*mounted in 14k gold; gross weight approximately: 58 grams; necklace length: 15 1/2in.; enhancer dimensions: 1 x 1 1/4in.*

**\$1,200 - 1,500**



351

351  
**A GOLD, DIAMOND AND GEMSTONE CUFF**

*mounted in 18k gold; estimated total diamond weight: 1.00ct; gross weight approximately: 71 grams; length: 6 1/2in.*

**\$2,500 - 3,500**



352

352  
**A PAIR OF GOLD AND DIAMOND BOW EAR CLIPS, FRANCE**

*mounted in 18k gold; estimated total diamond weight: 2.40cts; ear clip dimensions: 1 x 3/4in.; deficient three diamonds*

**\$2,000 - 3,000**



353

353  
**A DIAMOND, SAPPHIRE AND EMERALD BEE BROOCH**

*mounted in 14k gold and platinum; estimated total diamond weight: 1.00ct; dimensions: 1 1/2 x 1 7/8in.*

**\$1,000 - 1,500**



354



**PROPERTY OF A LADY**

354

**A GOLD AND GEMSTONE DEMI-PARURE, GERMANY**

set with tourmaline, citrine and amethyst cabochons; *mounted in 18k gold; gross weight approximately: 209 grams; necklace length: 16in.; bracelet length: 6 1/2in.; ear clip dimensions: 1 1/4 x 3/4in.*

**\$3,000 - 5,000**



355



357



356



360

355  
**A PAIR OF GOLD AND RUBY EAR PENDANTS**  
*mounted in 14k gold; ear pendant drop: 1 3/4in.*

**\$1,100 - 1,600**

356  
**AN ART DECO RUBY, AND DIAMOND BROOCH**  
*mounted in platinum and 18k gold; brooch dimensions: 1 3/8 x 1/2in.*

**\$1,500 - 2,000**

357  
**A SET OF TWO GOLD, BERYL AND IOLITE NECKLACES**  
*composed of fluted gemstone beads dispersed with gold beads; mounted in gold; gross weight approximately: 306 grams; necklace lengths: 18 & 26in.*

**\$2,200 - 2,800**



359

358  
**A YELLOW GOLD, AMETHYST, AND DIAMOND RING**  
*centering a half moon-shaped amethyst; mounted in 14k gold; ring size: 7 1/4*

**\$700 - 1,000**

359  
**A PAIR OF AQUAMARINE AND PINK TOURMALINE EAR CLIPS**  
*centering oval-shaped cabochon-cut aquamarines weighing approximately 45.85cts; mounted in 18k gold; gross weight approximately: 39 grams; ear clip dimensions: 1 1/4 x 1in.*

**\$1,800 - 2,200**

**PROPERTY OF AN ARIZONA LADY**

360  
**A DIAMOND OMEGA NECKLACE TOGETHER WITH AN OMEGA CHAIN**  
*mounted in 14k bi-color gold; estimated total diamond weight: 1.25cts; gross weight approximately: 31 grams; lengths: 17 1/8 to 17 3/4in.*

**\$1,000 - 1,500**



362



361

**PROPERTY OF A LADY**

361<sup>Y</sup>  
**A CORAL AND MOTHER-OF-PEARL INLAID BRACELET AND RING SET**  
*mounted in 18k gold; gross weight approximately: 62 grams; ring size: 7 1/2; bracelet length: 6 1/2in.*

**\$1,800 - 2,200**

Please note this item cannot be shipped internationally as it may contain endangered materials.

362  
**A PAIR OF GOLD AND TIGER'S EYE SHRIMP EAR CLIPS, SEAMAN SCHEPPS**  
*mounted in 18k gold; ear clip dimensions: 1 x 3/4in.; sigend: Seaman Schepps*

**\$2,000 - 4,000**



363

363  
**A MEN'S GOLD 'MARK COUPE' SUB-SECONDS WRISTWATCH, TIFFANY & CO.**  
swiss quartz movement with date and sub-seconds; mounted in 18k gold; gross weight approximately: 77 grams; length: 6 1/2 to 8in.; signed: Tiffany & Co.; numbered: 060261682

**\$1,200 - 1,800**



364

364  
**A BI-COLOR GOLD AND DIAMOND COLLAR NECKLACE, CHARRIOL**  
mounted in 18k gold; gross weight approximately: 43 grams; necklace length: 14 1/2in.; signed: Charriol; with signed box

**\$1,000 - 1,500**

365  
**AN ELF BROOCH AND FOX CUFFLINKS**  
both mounted in 18k gold; brooch dimensions: 2 1/4 x 3/4in.

**\$800 - 1,200**  
To be sold without reserve



365



366

366  
**A PLATINUM, PINK SAPPHIRE, AND DIAMOND RING**  
centering an oval-cut pink sapphire weighing approximately 5.75cts; mounted in platinum; ring size: 4 1/4

**\$1,500 - 2,000**



367

**367  
A GOLD, AMETHYST, AND DIAMOND  
PENDANT WITH CHAIN**

centering an oval-cut amethyst weighing approximately 29.00cts; mounted in 18k gold; pendant length: 1 1/4in.; necklace length: 18in.

**\$800 - 1,000**



368

**368  
A PAIR OF DIAMOND DROP EARRINGS**

comprised of rose-cut and diamond slices; mounted in 18k gold; earring drop: 3in.

**\$800 - 1,200**



**369  
A PAIR OF GOLD AND DIAMOND  
FOLIATE EAR PENDANTS, CIRCA 1960**

mounted in 18k gold; estimated total diamond weight: 1.40cts; ear pendant dimensions: 3/4 x 1 1/2in.

**\$1,200 - 1,800**

**370<sup>Y</sup>  
A GOLD, TURQUOISE AND CORAL  
NECKLACE**

suspending graduated coral beads and carved turquoise beads; mounted in 18k gold; length: 16in.

**\$1,000 - 1,500**

Please note this item cannot be shipped internationally as it may contain endangered materials.



370

369



371

**371  
A PLATINUM, RUBY AND DIAMOND  
RING**

mounted in platinum; estimated total diamond weight: 1.10ct; ring size: 7 1/4

**\$4,500 - 5,500**



372

372  
**A GOLD, CULTURED PEARL AND EMERALD RING**  
centering a rough emerald crystal, surrounded by cultured freshwater pearls; mounted in 14k gold; ring size: 6 1/4

\$500 - 600  
To be sold without reserve



373

**PROPERTY OF A THOUSAND OAKS, CALIFORNIA COLLECTOR**

373  
**A GOLD AND TURQUOISE MULTI-STRAND NECKLACE AND BRACELET**  
mounted in 14k gold; gross weight approximately: 13 grams; necklace length: 17in.; bracelet length: 7in.

\$800 - 1,000



374

**PROPERTY FROM THE ESTATE OF MADELINE VAN EERDE**

374  
**AN 18K GOLD AND DIAMOND HINGED CUFF, BORIS LEBEAU**  
mounted in 18k bi-color gold; gross weight approximately: 93 grams; bracelet length: 6in.; signed: Boris LeBeau

\$2,800 - 3,200





**PROPERTY FROM THE ESTATE OF  
MADELINE VAN EERDE**

375  
**A YELLOW GOLD, PLATINUM, AND  
 DIAMOND RING**  
 centering three old european-cut diamonds  
 weighing approximately 0.50, 0.50 and  
 1.25cts; mounted in 14k gold and platinum;  
 ring size: 8 1/4  
**\$2,000 - 4,000**

376  
**A GOLD, DIAMOND, AND GREEN  
 TOURMALINE RING BY BORIS LEBEAU  
 TOGETHER WITH TWO GOLD AND  
 DIAMOND BANDS**  
 centering a rectangular cushion-cut green  
 tourmaline weighing approximately 7.75cts;  
 mounted in 18k bi-color gold; estimated  
 total diamond weight: 2.40cts; gross weight  
 approximately: 28 grams; ring sized: 4 1/4, 4  
 3/4, 5; tourmaline ring signed: Boris  
**\$1,800 - 2,400**

377<sup>Y</sup>  
**A CORAL BEAD NECKLACE**  
 set with a momento mori clasp of braided  
 hair in gold; mounted in gold; gross weight  
 approximately: 63 grams; necklace length:  
 18in.  
**\$2,000 - 3,000**  
 Please note this item cannot be shipped  
 internationally as it may contain endangered  
 materials.

378  
**A BI-COLOR GOLD AND DIAMOND RING**  
 mounted in 18k bi-color gold; estimated total  
 diamond weight: 2.65cts; ring size: 6  
**\$800 - 1,000**



379



381



380



382



383

**PROPERTY FROM THE ESTATE OF MRS. ANTOINETTE QUILLERET, LOTS 379-381**

379<sup>Y</sup>

**A CARVED CORAL KOI FISH BROOCH, DAVID WEBB**

*mounted in 18k gold; dimensions: 2 1/8 x 1 1/8in.; signed: Webb*

**\$2,000 - 3,000**

Please note this item cannot be shipped internationally as it may contain endangered materials.

**380 AN EMERALD RING**

*centering a sugar loaf emerald weighing approximately: 28.00cts; mounted in 14k gold; size: 6 1/2*

**\$1,200 - 1,800**

**381 A DIAMOND BOMBE RING, DAVID WEBB**

*mounted in 18k bi-color gold; estimated total diamond weight: 3.85cts; size: 5 1/4; signed: Webb*

**\$4,000 - 6,000**

**382 A DIAMOND AND 18K GOLD COLLAR, PALOMA PICASSO FOR TIFFANY & CO., 1980**

*mounted in 18k bi-color gold; gross weight approximately: 119 grams; length: 12in.; width: 1 1/8in.; signed Paloma Picasso and Tiffany & Co.*

**\$2,500 - 3,500**

**383 A STAINLESS STEEL AND GOLD 'SANTOS' BRACELET WRISTWATCH WITH DATE AND MOONPHASE, CARTIER**

*quartz movement; mounted in stainless steel and 18k gold; case width: 27mm; length: 7in.; signed: Cartier; case no. 119901 01273*

**\$1,000 - 1,500**



384

**384**  
**A PAIR OF CARVED RUBY AND DIAMOND EAR PENDANTS**  
*mounted in 14k gold; estimated total diamond weight: 1.50cts; gross weight approximately 25 grams; ear pendant drop: 2 1/4in.*

**\$1,200 - 1,800**



385

**385**  
**A CABOCHON RUBY AND GOLD NECKLACE, TIFFANY & CO., ITALY**  
*mounted in 18k gold; gross weight approximately: 77 grams; necklace length: 15 3/4in.; signed: Tiffany & co; with signed necklace folder*

**\$3,000 - 5,000**

**386**  
**A GOLD, DIAMOND AND RUBY VIOLIN BROOCH**  
*mounted in 18k gold; brooch dimensions: 2 x 5/8in.*

**\$800 - 1,000**



386



387

**387**  
**A GOLD, DIAMOND AND COLORED STONE BRACELET**  
*mounted in 18k gold; gross weight approximately: 33 grams; length: 7 1/4in.*

**\$1,000 - 1,500**  
**To be sold without reserve**

# Property from an East Coast Collector

Lots 388-417



388

**388**  
**A GOLD, GARNET AND DIAMOND NECKLACE**  
centering an oval-cut garnet weighing approximately 7.60cts; mounted in 14k gold; gross weight approximately: 43 grams; necklace length: 15 1/4in.

**\$600 - 800**  
To be sold without reserve



390

**390**  
**A GOLD, EMERALD AND DIAMOND FLOWER BRACELET**  
mounted in 18k gold; gross weight approximately: 60 grams; bracelet length: 7in.

**\$1,200 - 1,800**



389

**389**  
**A BI-COLOR GOLD AND DIAMOND BRACELET**  
mounted in 18k bi-color gold; estimated total diamond weight: 5.40cts; gross weight approximately: 44 grams; bracelet length: 6in.

**\$1,800 - 2,200**



391

**391  
A LADIES GOLD 'CELLINI'  
WRISTWATCH, ROLEX**

manual wind movement, 19 jewels, unadjusted; mounted in 18k gold, with gold plated watch tang and buckle; gross weight approximately: 30 grams; length: 6 to 7 1/4in.; signed: Rolex; numbered: 4103

**\$1,200 - 1,800**



392

**392  
A PAIR OF GOLD, DIAMOND AND  
GEMSTONE 'PINWHEEL' BROOCHES**

mounted in 18k gold; brooch diameter: 1 1/4 x 1 1/8in.

**\$400 - 600  
To be sold without reserve**



393

**393  
A BI-COLOR GOLD CURB LINK  
BRACELET**

mounted in 18k bi-color gold; gross weight approximately: 86 grams; bracelet length: 8 3/4in.

**\$1,500 - 1,800**



394

**394  
AN UNMOUNTED DIAMOND**  
round brilliant-cut diamond with a known weight of 1.27cts; in a fitted box

**\$1,800 - 2,500**

# Property from an East Coast Collector

Lots 388-417



395

395  
**A GOLD AND LACQUER CIGARETTE BOX, CARTIER**

*mounted in 14k gold; gross weight approximately: 93 grams; cigarette box dimensions: 3 1/8 x 2 7/8in.*

**\$1,000 - 1,500**  
**To be sold without reserve**



396

396  
**A BROOCH WITH ART DECO CHARMS**

*comprised of a variety of gemstone and diamond charms including a cherry signed Cartier, house, bird, stage coach and clock; mounted in 14k gold and platinum; estimated total diamond weight: 1.00ct; gross weight approximately: 25 grams; brooch dimensions: 3 1/4 x 2in.*

**\$1,200 - 1,500**



# Property from an East Coast Collector

Lots 388-417



397



399



398

397

## A GOLD BRACELET

*mounted in 14k gold; gross weight approximately: 53 grams; bracelet length: 8in.*

**\$700 - 1,000**

To be sold without reserve

398

## A GOLD AND RAINBOW GEMSTONE LINE BRACELET

*including tourmaline, quartz, peridot and garnets; mounted in 14k gold; gross weight approximately: 31 grams; bracelet length: 7in.*

**\$500 - 700**

To be sold without reserve

399

## A LAPIS LAZULI AND DIAMOND NECKLACE TOGETHER WITH A PAIR OF LAPIS LAZULI EAR CLIPS

*mounted in 18k gold; gross weight approximately: 64 grams; necklace length: 15 3/4in.*

**\$1,100 - 1,500**

To be sold without reserve





400

400  
**A COLORED STONE AND DIAMOND PENDANT**

*mounted in 14k gold and platinum; gross weight approximately: 39 grams; pendant dimensions: 2 x 1 1/2in.; necklace length: 15in.*

**\$800 - 1,200**  
To be sold without reserve



401

401  
**A PAIR OF COLORED DIAMOND AND DIAMOND EAR CLIPS**

*mounted in 14k gold; estimated total diamond weight: 1.10cts; ear clip dimensions: 1 x 3/4in.*

**\$200 - 300**  
To be sold without reserve

Colored diamonds untested for origin of color

402  
**A GOLD, AMETHYST AND BLUE TOPAZ BRACELET**

*mounted in 14k gold; gross weight approximately: 37 grams; bracelet length: 7 1/4in.*

**\$400 - 600**  
To be sold without reserve



402



403

403  
**A GOLD, EMERALD, SAPPHIRE AND DIAMOND BRACELET WATCH**

*manual wind movement, 17 jewels, unadjusted; mounted in 18k gold; estimated total diamond weight: 1.65cts; gross weight approximately: 60 grams; bracelet length: 5 3/4in.*

**\$1,000 - 1,500**  
To be sold without reserve

# Property from an East Coast Collector

Lots 388-417



404  
**A SUITE OF COLORED STONE JEWELRY, MELLE POTTER**  
including tumbled aquamarine, beryl, and tourmalines; mounted in 14k gold; gross weight approximately: 102 grams

\$2,800 - 3,800

405  
**A GOLD CURB LINK BRACELET**  
mounted in 14k gold; gross weight approximately: 171 grams; bracelet length: 7 3/4in.

\$2,300 - 2,600

406  
**A COLORED SAPPHIRE AND DIAMOND RING**  
centering a square shaped cushion-cut yellow sapphire weighing approximately 3.30cts; mounted in bi-color 18k gold; ring size: 6 1/2

\$300 - 500  
To be sold without reserve



407



408



409

407

**A COLORED DIAMOND AND DIAMOND PENDANT**

centering a pear-shaped colored diamond weighing approximately 1.10cts; mounted in 14k white gold; necklace length: 15 3/4in.

**\$1,500-2,000**

408

**A GOLD FOLIATE MULTI-STONE BROOCH**

composed of an array of diopsides and peridots; mounted in 14k gold; brooch dimensions: 3 x 2 3/8in.

**\$1,000 - 1,500**

To be sold without reserve

409

**A GOLD COLLAR NECKLACE, ITALY**

mounted in 18k gold; gross weight approximately: 73 grams; necklace length: 16in.

**\$1,300 - 1,600**

# Property from an East Coast Collector

Lots 388-417



410



411

**410**  
**A RUBY AND DIAMOND BROOCH,  
TOGETHER WITH TWO PAIRS OF RUBY  
AND DIAMOND EAR CLIPS**

*mounted in 14k gold; gross weight approximately: 26 grams; brooch dimensions: 1 5/8in.; heart ear clip dimensions: 1 1/8 x 3/4in.; fan ear clips: 1/2 x 1in.*

**\$400 - 600**  
**To be sold without reserve**

**411**  
**A GOLD, RUBY AND DIAMOND BUCKLE  
BRACELET**

*mounted in 14k gold; gross weight approximately: 39 grams; bracelet length: 6 1/4 to 7 1/4in.*

**\$600 - 800**  
**To be sold without reserve**

**412**  
**AN AQUAMARINE, RUBY AND DIAMOND  
RING AND BRACELET SET**

*mounted in palladium and platinum; estimated total diamond weight: 1.20cts; ring size: 5; bracelet length: 6in.*

**\$2,000 - 4,000**

**413**  
**A STAR RUBY AND DIAMOND  
BRACELET**

*centering oval-shaped cabochon-cut star rubies weighing approximately 15.50cts; mounted in platinum; estimated total diamond weight: 2.45cts; bracelet length: 6 3/8in.*

**\$1,000 - 1,500**  
**To be sold without reserve**

**414**  
**A WHITE GOLD, SAPPHIRE AND  
DIAMOND LINE NECKLACE**

*mounted in 18k white gold; gross weight approximately: 34 grams; necklace length: 16 3/4in.*

**\$1,200 - 1,500**



413



414



412



412

# Property from an East Coast Collector

Lots 388-417



415



416



417

415

## **A DIAMOND AND COLORED STONE DRESS CLIP, RAYMOND YARD**

composed of carved sapphires, rubies and emeralds; mounted in platinum; estimated total diamond weight: 8.20cts; gross weight approximately: 27 grams; brooch dimensions: 2 1/2 x 1 1/4in.

**\$6,000 - 8,000**

416

## **AN ART DECO EMERALD AND DIAMOND BRACELET, CIRCA 1920**

centering oval shaped cabochon-cut emeralds weighing approximately 4.40cts; mounted in platinum; estimated total diamond weight: 3.95cts; bracelet length: 7 1/4in.; deficient three diamonds

**\$2,500 - 3,500**

417

## **A PLATINUM AND DIAMOND CIRCLE PIN**

mounted in platinum; estimated total diamond weight: 4.50cts; brooch diameter: 1 5/8in.

**\$700 - 800**

**To be sold without reserve**







# Bonhams



## Estate of Diahann Carroll

Los Angeles, California | March 10, 2020

THE FOLLOWING LOTS TO BE SOLD IN THE ESTATE OF DIAHANN CARROLL SALE STARTING AT 6PM



127



128

127

**A GOLD, EMERALD AND DIAMOND NECKLACE**

an omega necklace, suspending a rectangular step-cut emerald weighing approximately 13.10cts and a bail set with channel-set diamond baguettes; *mounted in 14k gold; gross weight approximately: 53 grams; necklace length: 15 1/2in.; pendant drop: 1 3/16in.*

**\$4,000 - 6,000**

128

**A PAIR OF WHITE GOLD AND DIAMOND EAR PENDANTS, MOUSSAIEFF**

centering a round brilliant and old European-cut diamonds weighing approximately 1.25cts, suspending illusion-set square step-cut diamond pendants; *mounted in 18k white gold; estimated remaining diamond weight: 2.40cts; ear pendant dimensions: 2 1/4 x 1/2in.; signed: Dorrit Moussaieff*

**\$1,800 - 2,200**



129

129

**A BI-COLOR GOLD AND DIAMOND BOW BROOCH**

set with round brilliant-cut diamonds weighing approximately 3.50cts; mounted in bi-color 18k gold; brooch dimensions: 2 x 3/4in.; deficient one diamond

\$2,000 - 3,000

130

**A BRAIDED GOLD BRACELET, TIFFANY & CO., ITALIAN**

mounted in 14k gold; gross weight approximately: 25 grams; bracelet length: 7 1/2in.; signed: Tiffany & Co.

\$500 - 600



131

131

**A PAIR OF GOLD, EMERALD, DIAMOND AND RUBY EAR PENDANTS, ITALIAN**

emerald and diamond ear clips suspending removable emerald, diamond and ruby pendants; mounted in 18k gold; estimated total diamond weight: 9.95cts; gross weight approximately: 43 grams; ear pendant dimensions: 1 1/2 x 2 1/4in.

\$8,000 - 12,000



132

**A DOUBLE-STRAND CULTURED PEARL NECKLACE  
TOGETHER WITH A COLORED CULTURED PEARL NECKLACE**

*mounted in 14k gold; gross weight approximately: 180 grams; white  
pearl necklace length: 17 1/2in., colored pearl necklace length: 19in.  
Pearls untested for origin of color*

**\$1,200 - 1,500**



134



135



133



136

133

**A GOLD AND DIAMOND BANGLE BRACELET**

centering round brilliant-cut diamonds weighing approximately 1.00ct; mounted in 18k gold; gross weight approximately: 28 grams; bracelet length: 6 1/4in.; signed: Cartier and Aldo Cipullo

**\$5,000 - 7,000**

134

**A PAIR OF GOLD AND ONYX CUFFLINKS**

each centering a black onyx tablet measuring approximately 14.07 x 11.47 x 2.23mm; mounted in 18k gold; cufflink dimensions: 3/4 x 5/16in.

**\$200 - 300**

135

**A GOLD 'BAIGNOIRE' WRISTWATCH, CARTIER**

manual wind movement; mounted in 18k gold; gross weight approximately: 31 grams; watch length: 5 1/2in.; signed: Cartier

**\$2,000 - 3,000**

136

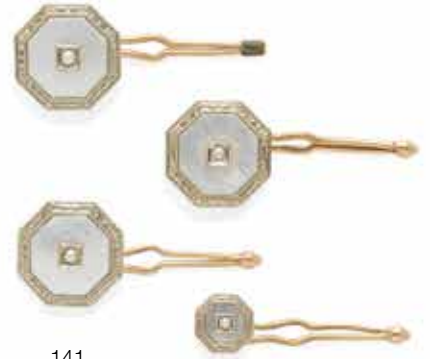
**A GOLD 'TANK' WRISTWATCH, CARTIER**

quartz movement; mounted in 18k gold; gross weight approximately: 27 grams; watch length: 6 1/4 to 7 1/4in.; signed: Cartier

**\$1,000 - 1,500**



137



141



139



138



140

**137  
A PEARL AND DIAMOND BAR BROOCH,  
TURN OF THE CENTURY**

centering alternating old mine-cut diamonds and pearls; *mounted in platinum topped 14k gold; estimated total diamond weight: 1.20cts; brooch length: 1 3/4in.*

**\$2,500 - 3,500**

**138  
AN 18 WHITE GOLD AND DIAMOND PENDANT**

centering an old European-cut diamond weighing approximately 1.35cts and surrounded by accent diamonds, set into a hand fabricated mounting; *mounted in 18k white gold; estimated remaining diamond weight: 2.00cts; pendant dimensions: 1 1/4 x 1/2in*

**\$2,500 - 3,500**

**139  
A RUBY AND DIAMOND BROOCH, 2ND HALF OF THE 19TH  
CENTURY**

*mounted in silver-topped gold; estimated total diamond weight: 5.10cts; gross weight approximately: 36 grams; brooch dimensions: 3 1/4 x 2 1/8in.*

**\$10,000 - 12,000**

**140  
A PLATINUM AND DIAMOND BROOCH, CIRCA 1910**

centering seven old mine-cut diamonds set into hand engraved platinum brooch; *mounted in platinum; estimated total diamond weight: 1.40cts; brooch dimensions: 1 1/8 x 1/2in.*

**\$1,000 - 1,500**

**141  
A SET OF SHIRT STUDS**

*mounted in 14k bi-color gold*

**\$300 - 400**





142



143

142

**A WHITE GOLD, DIAMOND AND CULTURED PEARL NECKLACE**

cultured pearls measuring approximately 8.20mm to 8.78mm;  
mounted in 14k white gold; gross weight approximately: 119 grams;  
necklace length: 15 1/2in.

\$800 - 1,000

143

**A WHITE GOLD, SAPPHIRE AND DIAMOND CLIP BROOCH**

centering a cascade of oval-shaped sapphires weighing approximately  
9.25cts; mounted in 18k white gold; clip dimensions: 1 1/8 x 1 1/4in.  
deficient one diamond

\$1,200 - 1,500





144



146



145

144

**A GOLD, LAPIS LAZULI AND DIAMOND BRACELET AND RING SET**

a free-form bracelet and ring set with oval shaped cabochon-cut lapis lazuli and round brilliant-cut diamonds; mounted in 18k gold; estimated total diamond weight: 2.45cts; gross weight approximately: 55 grams; bracelet length: 6in.; ring size: 5

\$2,500 - 3,500

146

**A GOLD, DIAMOND AND BAROQUE PEARL ELEPHANT BROOCH**

centering a free-form baroque pearl measuring approximately 32.71 x 16.76 x 11.43mm; mounted in 18k bi-color gold; estimated total diamond weight: 1.90cts; gross weight approximately: 29 grams; brooch dimensions: 1 1/2 x 2in.

\$2,000 - 3,000

145

**A GOLD LINK BRACELET, TIFFANY & CO., ITALY**

mounted in 18k gold; bracelet length: 7 1/2in.; signed: T & Co.

\$300 - 400



147



148



149



150



147

**A GOLD FLUTED BYPASS RING, ITALIAN**

fluted gold waves undulating in a bypass style; mounted in 18k gold; ring size: 7

\$400 - 600

148

**A PAIR OF GOLD ANCHOR-LINK NECKLACES**

mounted in 18k gold, one with a 14k gold lobster clasp, gross weight approximately: 69 grams; necklace lengths: 11 1/2 and 17in.

\$1,000 - 1,500

149

**PAIR OF GOLD, SAPPHIRE AND DIAMOND EARCLIPS**

centering oval-cut sapphires weighing approximately 4.65cts interspersed with diamonds; mounted in 14k gold; estimated total diamond weight: 2.30cts; ear clip dimensions: 3/4 x 5/8in.

\$1,200 - 1,500

150

**A PAIR OF GOLD AND ENAMEL EAR CLIPS, TIFFANY & CO.**

vibrant royal blue enamel, styled with three gold stripes; mounted in 18k gold; ear clip dimensions: 7/8 x 3/8in.; signed: Tiffany & Co.

\$800 - 1,000



151

152

151

**A GOLD TWIST LINK NECKLACE**

*mounted in 14k gold; gross weight approximately: 150 grams; length: 32in.*

**\$2,000 - 3,000**

152

**A GOLD "CANCER" ZODIAC MEDALLION, TIFFANY & CO. CIRCA 1970**

*a high relief carving of a crab, surrounded by diamonds and a zodiac sign for "Cancer" set on the verso; mounted in 18k gold; gross weight approximately: 54 grams; medallion dimensions: 2 x 1 3/4in.*

**\$5,000 - 7,000**



153



154



155

153

**A GOLD, SAPPHIRE AND DIAMOND RING**

centering an oval-shaped brilliant-cut sapphire weighing approximately 1.15cts, surrounded by a sunburst of square step-cut sapphires weighing approximately 0.50ct; mounted in 14k gold; ring size: 4 1/2 deficient three square-cut sapphires

**\$1,000 - 1,500**

154

**A GOLD, SAPPHIRE, DIAMOND AND SIMULANT BRACELET**

mounted in 14k bi-color gold; gross weight approximately: 37 grams; bracelet length: 7 3/4in.

**\$1,500 - 2,000**

155

**A DIAMOND AND CULTURED PEARL 'TOI ET MOI' RING**

centering a cut-cornered square modified brilliant with a known weight of 6.03cts and a cultured pearl measuring approximately 13.23 x 13.27mm; mounted in platinum and 18k white gold; ring size: 7; accompanied by a photograph of Carroll wearing lot 153 and 155

**\$40,000 - 70,000**

Accompanied by GIA report #2203876305, dated January 29, 2020, stating the Diamond as: I color, VS2 clarity.



# Conditions of sale

The following Conditions of Sale, as amended by any published or posted notices or verbal announcements during the sale, constitute the entire terms and conditions on which property listed in the catalog shall be offered for sale or sold by Bonhams & Butterfields Auctioneers Corp. and any consignor of such property for whom Bonhams acts as agent. By participating in this sale, you agree to be bound by these terms and conditions.

If live online bidding is available for the subject auction, additional terms and conditions of sale relating to online bidding will apply; see [www.bonhams.com/WebTerms](http://www.bonhams.com/WebTerms) for the supplemental terms. As used herein, "Bonhams," "we" and "us" refer to Bonhams & Butterfields Auctioneers Corp.

1. As used herein, the term "bid price" means the price at which a lot is successfully knocked down to the buyer. The term "purchase price" means the aggregate of (a) the bid price, (b) a PREMIUM retained by us and payable by the buyer (the "buyer's premium"), EQUAL TO 27.5% OF THE FIRST \$3,000 OF THE BID PRICE, 25% OF THE AMOUNT OF THE BID PRICE ABOVE \$3,000 UP TO AND INCLUDING \$400,000, 20% OF THE AMOUNT OF THE BID PRICE ABOVE \$400,000 UP TO AND INCLUDING \$4,000,000, AND 13.9% OF THE AMOUNT OF THE BID PRICE OVER \$4,000,000, and (c) unless the buyer is exempt by law from the payment thereof, any Alabama, Arizona, California, Colorado, Connecticut, Florida, Georgia, Hawaii, Idaho, Illinois, Iowa, Indiana, Kentucky, Louisiana, Maine, Massachusetts, Michigan, Minnesota, Nevada, New Jersey, New York, North Carolina, Ohio, Pennsylvania, Rhode Island, Texas, Utah, Virginia, Washington, D.C., Washington, Wisconsin, Wyoming or other state or local sales tax (or compensating use tax) and other applicable taxes. With regard to New York sales tax, please refer to the "Sales and Use Tax" section of these Conditions of Sale.

2. In order to bid at the sale, prospective bidders must submit to Bonhams a completed bidder registration form (appearing at the end of this catalog) and any other requested information or references. New bidders and bidders who have not recently updated their registration information must pre-register to bid at least two business days before the sale. Individuals will be required to provide government-issued proof of identity and proof of address. Entity clients will be required to provide documentation including confirmation of entity registration showing the registered name, confirmation of registered address, documentary proof of officers and beneficial owners, proof of authority to transact on behalf of the entity and government-issued proof of identity for the individual who is transacting on the entity's behalf.

We may also request a financial reference and /or deposit from bidders before approving the bidder registration. In the event a deposit is submitted and you are not the successful bidder, your deposit will be returned to you. If you are the successful bidder, any such deposit will be credited to offset the appropriate portion of the purchase price.

We reserve the right to request further information, including regarding the source of funds, in order to complete bidder identification and registration procedures (including completing any anti-money laundering and/or anti-terrorism financing checks we may require) to our satisfaction. If our bidder identification and registration procedures are not satisfied, we may, in our sole discretion, decline to register any bidder or reject any bid or cancel any sale to such bidder.

Every bidder shall be deemed to act as a principal unless prior to the commencement of the sale there is a written acceptance by Bonhams of a bidder registration form completed and signed by the principal which clearly states that the authorized bidding agent is acting on behalf of the named principal. Absent such written acceptance by Bonhams, any person placing a bid as agent on behalf of another (whether or not such person has disclosed that fact or the identity of the principal) may be jointly and severally liable with the principal under any contract resulting from the acceptance of a bid. Every bidder shall be responsible for

any use of its assigned paddle or bidding account, regardless of the circumstances.

3. You represent and warrant that: (i) you have provided us with true and correct copies of valid identification and proof of residence and, if applicable, financial and/or corporate documents; (ii) neither you, your principal (if applicable, and subject to Bonhams' prior written acceptance pursuant to paragraph 2 above), nor any individual or entity with a beneficial or ownership interest in either or in the purchase transaction is on the Specially Designated Nationals List maintained by the Office of Foreign Assets Control of the U.S. Department of the Treasury nor subject to any other sanctions or embargo program or regulation in effect in the United States, European Union, England and Wales, or other applicable jurisdictions; (iii) if you are acting as an agent for a principal, you have conducted appropriate due diligence into such principal, and agree that Bonhams shall be entitled to rely upon such due diligence, you will retain adequate records evidencing such due diligence for a period of five (5) years following the consummation of the sale, and will make these records available for inspection upon Bonhams' request; (iv) neither the purchase transaction (including your bidding activity) nor the purchase funds are connected with nor derive from any criminal activity, and they are not designed to nor have they or shall they, violate the banking, anti-money laundering, or currency transfer laws or other regulations (including without limitation, import-export laws) of any country or jurisdiction, or further any other unlawful purpose, including without limitation collusion, anti-competitive activity, tax evasion or tax fraud.

You acknowledge and agree that we may rely upon the accuracy and completeness of the foregoing warranties.

4. On the fall of the auctioneer's hammer, the highest bidder shall have purchased the offered lot in accordance and subject to compliance with all of the conditions set forth herein and (a) assumes full risk and responsibility therefor, (b) if requested will sign a confirmation of purchase, and (c) will pay the purchase price in full or such part as we may require for all lots purchased. No lot may be transferred.

Unless otherwise agreed, payment in good, cleared funds is due and payable within five (5) business days following the auction sale. Whenever the buyer pays only a part of the total purchase price for one or more lots purchased, we may apply such payments, in our sole discretion, to the lot or lots we choose. Payment will not be deemed made in full until we have received good, cleared funds for all amounts due. Title in any purchased property will not pass until full and final payment has been received by Bonhams. Accounts must be settled in full before property is released to the buyer. In the event property is released earlier, such release will not affect the passing of title or the buyer's obligation to timely remit full payment.

We reserve the right to refuse to accept payment from a source other than the registered bidder or buyer of record. Once an invoice is issued, we cannot change the buyer's name on an invoice.

Payment for purchases must be made in the currency in which the sale is conducted and may be made in or by (a) cash, up to the amount of US \$5,000 (whether by single or multiple related payments), or the equivalent in the currency in which the sale is conducted, (b) cashier's check or money order, (c) personal check with approved credit drawn on a U.S. bank, (d) wire transfer or other immediate bank transfer, or (e) Visa, MasterCard, American Express or Discover credit, charge or debit card, provided that the registered bidder or buyer's name is printed on the card. A processing fee will be assessed on any returned checks.

To the fullest extent permitted by applicable law, the buyer grants us a security interest in the property, and we may retain as collateral security for the buyer's obligations to us, any property and all monies held or received by us for the account of the buyer, in our possession. We also retain all rights of a secured party under the California Commercial

Code, and you agree that we may file financing statements without your signature. If the foregoing conditions or any other applicable conditions herein are not complied with, in addition to all other remedies available to us and the consignor by law, we may at our election: (a) hold the buyer liable for the full purchase price and any late charges, collection costs, attorneys' fees and costs, expenses and incidental damages incurred by us or the consignor arising out of the buyer's breach; (b) cancel the sale, retaining as liquidated damages all payments made by the buyer; and/or (c) cancel the sale and/or resell the purchased property, at public auction and/or by private sale, and in such event the buyer shall be liable for the payment of all consequential damages, including any deficiencies or monetary losses, and all costs and expenses of such sale or sales, our commissions at our standard rates, all other charges due hereunder, all late charges, collection costs, attorneys' fees and costs, expenses and incidental damages. In addition, where two or more amounts are owed in respect of different transactions by the buyer to us, to Bonhams 1793 Limited and/or to any of our other affiliates, subsidiaries or parent companies worldwide within the Bonhams Group, we reserve the right to apply any monies paid in respect of a transaction to discharge any amount owed by the buyer. If all fees, commissions, premiums, bid prices and other sums due to us from the buyer are not paid promptly as provided in these Conditions of Sale, we reserve the right to impose a finance charge equal to 1.5% per month (or, if lower, the maximum nonusurious rate of interest permitted by applicable law), on all amounts due to us beginning on the 31st day following the sale until payment is received, in addition to other remedies available to us by law.

5. We reserve the right to withdraw any property and to divide and combine lots at any time before such property's auction. Unless otherwise announced by the auctioneer at the time of sale, all bids are per lot as numbered in the catalog and no lots shall be divided or combined for sale.

6. We reserve the right to reject a bid from any bidder, to split any bidding increment, and to advance the bidding in any manner the auctioneer may decide. In the event of any dispute between bidders, or in the event the auctioneer doubts the validity of any bid, the auctioneer shall have sole and final discretion either to determine the successful bidder, re-open the bidding, or to cancel the sale and re-offer and resell the article in dispute. If any dispute arises after the sale, our sales records shall be conclusive in all respects.

We further reserve the right to cancel the sale of any property if (i) you are in breach of your representations and warranties as set forth in paragraph 3 above; (ii) we, in our sole discretion, determine that such transaction might be unlawful or might subject Bonhams or the consignor to any liability to any third party; or (iii) there are any other grounds for cancellation under these Conditions of Sale.

7. If we are prevented by fire, theft or any other reason whatsoever from delivering any property to the buyer or a sale otherwise cannot be completed, our liability shall be limited to the sum actually paid therefor by the buyer and shall in no event include any compensatory, incidental or consequential damages.

8. All lots in the catalog are offered subject to a reserve unless otherwise indicated in the catalog. The reserve is the confidential minimum bid price at which such lot will be sold and it does not to exceed the low estimate value for the lot. If a lot is offered subject to a reserve, we may implement such reserve by bidding on behalf of the consignor, whether by opening bidding or continuing bidding in response to other bidders until reaching the reserve. If we have an interest in an offered lot and the proceeds therefrom other than our commissions, we may bid up to the reserve to protect such interest. If the auctioneer determines that any opening or subsequent bid is below the reserve for a lot, (s)he may reject such opening bid and withdraw the item from sale. **CONSIGNORS ARE NOT ALLOWED TO BID ON THEIR OWN ITEMS.**

# Conditions of sale - Continued

9. Other than as provided in the Limited Right of Rescission with respect to identification of authorship, all property is sold "AS IS" and any statements contained in the catalog or in any advertisement, bill of sale, announcement, condition report, invoice or elsewhere as to period, culture, source, origin, media, measurements, size, quality, rarity, provenance, importance, exhibition and literature of historical relevance, merchantability, fitness for a particular purpose, or physical condition ARE QUALIFIED STATEMENTS OF OPINION AND NOT REPRESENTATIONS, WARRANTIES, OR ASSUMPTION OF LIABILITY. Neither Bonhams nor the consignor shall be responsible for any error or omission in the catalog description of any property. No employee or agent of Bonhams is authorized to make on our behalf or on that of the consignor any representation or warranty, oral or written, with respect to any property.

10. All purchased property shall be removed from the premises at which the sale is conducted by the date(s) and time(s) set forth in the "Buyer's Guide" portion of this catalog. If not so removed, daily storage fees will be payable to us by the buyer as set forth therein. We reserve the right to transfer property not so removed to an offsite warehouse at the buyer's risk and expense, as set forth in more detail in the "Buyer's Guide." Packing and handling of purchased lots are the responsibility of the buyer and at the buyer's entire risk, as are the identification, application for, and cost(s) of obtaining of any necessary export, import, restricted material (e.g. endangered species) or other permit for such lots.

For an additional fee, Bonhams may provide packing and shipping services for certain items as noted in the "Buyer's Guide" section of the catalog.

11. The copyright in the text of the catalog and the photographs, digital images and illustrations of lots in the catalog belong to Bonhams or our licensors. You will not reproduce or permit anyone else to reproduce such text, photographs, digital images or illustrations without our prior written consent. Bonhams and the consignor make no representation or warranty as to whether the buyer acquires any copyrights on the purchase of an item of Property.

12. Bonhams may, in our discretion, as a courtesy and free of charge, execute bids on your behalf if so instructed by you, provided that neither Bonhams nor our employees or agents will be liable for any error or default (whether human or otherwise) in doing so or for failing to do so. Without limiting the foregoing, Bonhams (including our agents and employees) shall not be responsible for any problem relating to telephone, online, or other bids submitted remotely through any means, including without limitation, any telecommunications or internet fault or failure, or breakdown or problems with any devices or online platforms, including third-party online platforms, regardless of whether such issue arises with our, your, or such third-party's technology, equipment, or connection. By participating at auction by telephone or online, bidders expressly consent to the recording of their bidding sessions and related communications with Bonhams and our employees and agents, and acknowledge their acceptance of these Conditions of Sale as well as any additional terms and conditions applicable to any such bidding platform or technology.

13. These Conditions of Sale shall bind the successors and assigns of all bidders and buyers and inure to the benefit of our successors and assigns. No waiver, amendment or modification of the terms hereof (other than posted notices or oral announcements during the sale) shall bind us unless specifically stated in writing and signed by us. No act or omission of Bonhams, its employees or agents, nor any failure thereof to exercise any remedy hereunder, shall operate or be deemed to operate as a waiver of Bonhams' rights under these Conditions of Sale. If any part of these Conditions of Sale is for any reason invalid or unenforceable, the rest shall remain valid and enforceable.

14. These Conditions of Sale and the buyer's and our respective rights and obligations hereunder shall be governed

by and construed and enforced in accordance with the laws of the State of California. Any dispute, controversy or claim arising out of or relating to this agreement, or the breach, termination or validity thereof, brought by or against Bonhams (but not including claims brought against the consignor by the buyer of lots consigned hereunder) shall be resolved by the procedures set forth below.

15. You accept and agree that Bonhams will hold and process your personal information and may share and use it as required by law and as described in, and in line with Bonhams' Privacy Policy, available at website at [www.bonhams.com/legals/](http://www.bonhams.com/legals/). If you desire access, update, or restriction to the use of your personal information, please email [data.protection@bonhams.com](mailto:data.protection@bonhams.com).

## SALES AND USE TAX

New York sales tax is charged on the hammer price, buyer's premium and any other applicable charges on any property collected or delivered in New York State, regardless of the state or country in which the buyer resides or does business. Buyers who make direct arrangements for collection by a shipper who is considered a "private" or "contract" carrier by the New York Department of Taxation and Finance will be charged New York sales tax, regardless of the destination of the property. Property collected for delivery to a destination outside of New York by a shipper who is considered a "common carrier" by the New York Department of Taxation and Finance (e.g. United States Postal Service, United Parcel Service, and FedEx) is not subject to New York sales tax, but if it is delivered into any state in which Bonhams is registered or otherwise conducts business sufficient to establish a nexus, Bonhams may be required by law to collect and remit the appropriate sales tax in effect in such state. Property collected for delivery outside of the United States by a freight forwarder who is registered with the Transportation Security Administration ("TSA") is not subject to New York sales tax.

## MEDIATION AND ARBITRATION PROCEDURES

(a) Within 30 days of written notice that there is a dispute, the parties or their authorized and empowered representatives shall meet by telephone and/or in person to mediate their differences. If the parties agree, a mutually acceptable mediator shall be selected and the parties will equally share such mediator's fees. The mediator shall be a retired judge or an attorney familiar with commercial law and trained in or qualified by experience in handling mediations. Any communications made during the mediation process shall not be admissible in any subsequent arbitration, mediation or judicial proceeding. All proceedings and any resolutions thereof shall be confidential, and the terms governing arbitration set forth in paragraph (c) below shall govern.

(b) If mediation does not resolve all disputes between the parties, or in any event no longer than 60 days after receipt of the written notice of dispute referred to above, the parties shall submit the dispute for binding arbitration before a single neutral arbitrator. Such arbitrator shall be a retired judge or an attorney familiar with commercial law and trained in or qualified by experience in handling arbitrations. Such arbitrator shall make all appropriate disclosures required by law. The arbitrator shall be drawn from a panel of a national arbitration service agreed to by the parties, and shall be selected as follows: (i) If the national arbitration service has specific rules or procedures, those rules or procedures shall be followed; (ii) If the national arbitration service does not have rules or procedures for the selection of an arbitrator, the arbitrator shall be an individual jointly agreed to by the parties. If the parties cannot agree on a national arbitration service, the arbitration shall be conducted by the American Arbitration Association, and the arbitrator shall be selected in accordance with the Rules of the American Arbitration Association. The arbitrator's award shall be in writing and shall set forth findings of fact and legal conclusions.

(c) Unless otherwise agreed to by the parties or provided by the published rules of the national arbitration service:

(i) the arbitration shall occur within 60 days following the selection of the arbitrator;

(ii) the arbitration shall be conducted in the designated location, as follows: (A) in any case in which the subject auction by Bonhams took place or was scheduled to take place in the State of New York or Connecticut or the Commonwealth of Massachusetts, the arbitration shall take place in New York City, New York; (B) in all other cases, the arbitration shall take place in the city of San Francisco, California; and

(iii) discovery and the procedure for the arbitration shall be as follows:

(A) All arbitration proceedings shall be confidential;

(B) The parties shall submit written briefs to the arbitrator no later than 15 days before the arbitration commences;

(C) Discovery, if any, shall be limited as follows: (i) Requests for no more than 10 categories of documents, to be provided to the requesting party within 14 days of written request thereof; (ii) No more than two (2) depositions per party, provided however, the deposition(s) are to be completed within one (1) day; (iii) Compliance with the above shall be enforced by the arbitrator in accordance with California law;

(D) Each party shall have no longer than eight (8) hours to present its position. The entire hearing before the arbitrator shall not take longer than three (3) consecutive days;

(E) The award shall be made in writing no more than 30 days following the end of the proceeding. Judgment upon the award rendered by the arbitrator may be entered by any court having jurisdiction thereof.

To the fullest extent permitted by law, and except as required by applicable arbitration rules, each party shall bear its own attorneys' fees and costs in connection with the proceedings and shall share equally the fees and expenses of the arbitrator.

## LIMITED RIGHT OF RESCISSION

If within one (1) year from the date of sale, the original buyer (a) gives written notice to us alleging that the identification of Authorship (as defined below) of such lot as set forth in the **BOLD TYPE** heading of the catalog description of such lot (as amended by any saleroom notices or verbal announcements during the sale) is not substantially correct based on a fair reading of the catalog (including the terms of any glossary contained therein), and (b) within 10 days after such notice returns the lot to us in the same condition as at the time of sale, and (c) establishes the allegation in the notice to our satisfaction (including by providing one or more written opinions by recognized experts in the field, as we may reasonably require), then the sale of such lot will be rescinded and, unless we have already paid to the consignor monies owed him in connection with the sale, the original purchase price will be refunded.

If, prior to receiving such notice from the original buyer alleging such defect, we have paid the consignor monies owed him in connection with the sale, we shall pay the original buyer the amount of our commissions, any other sale proceeds to which we are entitled and applicable taxes received from the buyer on the sale and make demand on the consignor to pay the balance of the original purchase price to the original buyer. Should the consignor fail to pay such amount promptly, we may disclose the identity of the consignor and assign to the original buyer our rights against the consignor with respect to the lot the sale of which is sought to be rescinded. Upon such disclosure and assignment, any liability of Bonhams as consignor's agent with respect to said lot shall automatically terminate.

The foregoing limited right of rescission is available to the original buyer only and may not be assigned to or relied upon

# Conditions of sale - Continued

by any subsequent transferee of the property sold. The buyer hereby accepts the benefit of the consignor's warranty of title and other representations and warranties made by the consignor for the buyer's benefit. Nothing in this section shall be construed as an admission by us of any representation of fact, express or implied, obligation or responsibility with respect to any lot. THE BUYER'S SOLE AND EXCLUSIVE REMEDY AGAINST BONHAMS FOR ANY REASON WHATSOEVER IS THE LIMITED RIGHT OF RESCISSION DESCRIBED IN THIS SECTION.

"Authorship" means only the identity of the creator, the period, culture and source or origin of the lot, as the case may be, as set forth in the **BOLD TYPE** heading of the print catalog entry. The right of rescission does not extend to: (a) works of art executed before 1870 (unless these works are determined to be counterfeits created since 1870), as this is a matter of current scholarly opinion which can change; (b) titles, descriptions, or other identification of offered lots, which information normally appears in lower case type below the **BOLD TYPE** heading identifying the Authorship; (c) Authorship of any lot where it was specifically mentioned that there exists a conflict of specialist or scholarly opinion regarding the Authorship of the lot at the time of sale; (d) Authorship of any lot which as of the date of sale was in accordance with the then generally-accepted opinion of scholars and specialists regarding the same; or (e) the identification of periods or dates of creation in catalog descriptions which may be proven inaccurate by means of scientific processes that are not generally accepted for use until after publication of the catalog in which the property is offered or that were unreasonably expensive or impractical to use at the time of such publication.

## LIMITATION OF LIABILITY

EXCEPT AS EXPRESSLY PROVIDED ABOVE, ALL PROPERTY IS SOLD "AS IS." NEITHER BONHAMS NOR THE CONSIGNOR MAKES ANY REPRESENTATION

OR WARRANTY, EXPRESS OR IMPLIED, AS TO THE MERCHANTABILITY, FITNESS OR CONDITION OF THE PROPERTY OR AS TO THE CORRECTNESS OF DESCRIPTION, GENUINENESS, ATTRIBUTION, PROVENANCE OR PERIOD OF THE PROPERTY OR AS TO WHETHER THE BUYER ACQUIRES ANY COPYRIGHTS OR OTHER INTELLECTUAL PROPERTY RIGHTS IN LOTS SOLD OR AS TO WHETHER A WORK OF ART IS SUBJECT TO THE ARTIST'S MORAL RIGHTS OR OTHER RESIDUAL RIGHTS OF THE ARTIST. THE BUYER EXPRESSLY ACKNOWLEDGES AND AGREES THAT IN NO EVENT SHALL BONHAMS BE LIABLE FOR ANY DAMAGES INCLUDING, WITHOUT LIMITATION, ANY COMPENSATORY, INCIDENTAL OR CONSEQUENTIAL DAMAGES. IN NO EVENT SHALL THE AGGREGATE LIABILITY OF BONHAMS AND ITS CONSIGNOR TO A PURCHASER EXCEED THE PURCHASE PRICE ACTUALLY PAID FOR A DISPUTED ITEM OF PROPERTY.

---

## Seller's guide

### SELLING AT AUCTION

Bonhams can help you every step of the way when you are ready to sell art, antiques and collectible items at auction. Our regional offices and representatives throughout the US are available to service all of your needs. Should you have any further questions, please visit our website at [www.bonhams.com/us](http://www.bonhams.com/us) for more information or call our Client Services Department at +1 (323) 850 7500.

### AUCTION ESTIMATES

The first step in the auction process is to determine the auction value of your property. Bonhams' world-renowned specialists will evaluate your special items at no charge and in complete confidence. You can obtain an auction estimate in many ways:

- Attend one of our Auction Evaluation Events held regularly at our galleries and in other major metropolitan areas. The updated schedule for Bonhams Auction Evaluation Events is available at [www.bonhams.com/us](http://www.bonhams.com/us).
- Call our Client Services Department to schedule a private appointment at one of our galleries. If you have a large collection, our specialists can travel, by appointment, to evaluate your property on site.
- Send clear photographs to us of each individual item, including item dimensions and other pertinent information with each picture. Photos should be sent to Bonhams' address in envelopes marked as "photo auction estimate". Alternatively, you can submit your request using our online form at [www.bonhams.com/us](http://www.bonhams.com/us). Digital images may be attached to the form. Please limit your images to no more than five (5) per item.

### CONSIGNING YOUR PROPERTY

After you receive an estimate, you may consign your property to us for sale in the next appropriate auction. Our staff assists you throughout the process, arranging transportation of your items to our galleries (at the consignor's expense), providing a detailed inventory of your consignment, and reporting the prices realized for each lot. We provide secure storage for your property in our warehouses and all items are insured throughout the auction process. You will receive payment for your property approximately 35 days after completion of sale.

Sales commissions vary with the potential auction value of the property and the particular auction in which the property is offered. Please call us for commission rates.

### PROFESSIONAL APPRAISAL SERVICES

Bonhams' specialists conduct insurance and fair market value appraisals for private collectors, corporations, museums, fiduciaries and government entities on a daily basis. Insurance appraisals, used for insurance purposes, reflect the cost of replacing property in today's retail market. Fair market value appraisals are used for estate, tax and family division purposes and reflect prices paid by a willing buyer to a willing seller.

When we conduct a private appraisal, our specialists will prepare a thorough inventory listing of all your appraised property by category. Valuations, complete descriptions and locations of items are included in the documentation.

Appraisal fees vary according to the nature of the collection, the amount of work involved, the travel distance, and whether the property is subsequently consigned for auction.

Our appraisers are available to help you anywhere and at any time. Please call our Client Services Department to schedule an appraisal.

### ESTATE SERVICES

Since 1865, Bonhams has been serving the needs of fiduciaries – lawyers, trust officers, accountants and executors – in the disposition of large and small estates. Our services are specially designed to aid in the efficient appraisal and disposition of fine art, antiques, jewelry, and collectibles. We offer a full range of estate services, ranging from flexible financial terms to tailored accounting for heirs and their agents to world-class marketing and sales support.

For more information or to obtain a detailed Trust and Estates package, please visit our website at [www.bonhams.com/us](http://www.bonhams.com/us) or contact our Client Services Department.



# Buyer's guide

## BIDDING & BUYING AT AUCTION

Whether you are an experienced bidder or an enthusiastic novice, auctions provide a stimulating atmosphere unlike any other. Bonhams previews and sales are free and open to the public. As you will find in these directions, bidding and buying at auction is easy and exciting. Should you have any further questions, please visit our website at [www.bonhams.com](http://www.bonhams.com) or call our Client Services Department at +1 (323) 850 7500.

### Catalogs

Before each auction we publish illustrated catalogs that include dates and times for previews and auctions. Our catalogs also provide descriptions and estimated values for each "lot." A lot may refer to a single item or to a group of items auctioned together. We offer our catalogs by subscription or by single copy. For information on subscribing to our catalogs, you may refer to the subscription form in this catalog, call our Client Services Department, or visit our website at [www.bonhams.com/us](http://www.bonhams.com/us).

### Previews

Auction previews are your chance to inspect each lot prior to the auction. We encourage you to look closely and examine each object on which you may want to bid so that you will know as much as possible about it. Items are sold "as is" and with all faults; illustrations in our catalogs, website and other materials are provided for identification only. At the previews, our staff is always available to answer your questions and guide you through the auction process. Condition reports may be available upon request.

### Estimates

Bonhams catalogs include estimates for each lot, exclusive of buyer's premium and tax. The estimates are provided as an approximate guide to current market value and should not be interpreted as a representation or prediction of actual selling prices. They are determined well in advance of a sale and are subject to revision. Please contact us should you have any questions about value estimates.

### Reserves

All lots in a catalog are subject to a reserve unless otherwise indicated. The reserve is the minimum price that the seller is willing to accept for a lot. This amount is confidential and does not exceed the low estimated value.

## BIDDING AT AUCTION

At Bonhams, you can bid in many ways: in person, via absentee bid, over the phone, or via Bonhams' online bidding facility. Absentee bids can be submitted in person, online, via fax or via email.

A valid Bonhams client account is required to participate in bidding activity. You can obtain registration information online, at the reception desk or by calling our Client Services Department.

By bidding at auction, whether in person or by agent, by absentee bid, telephone, online or other means, the buyer or bidder agrees to be bound by the Conditions of Sale.

Lots are auctioned in consecutive numerical order as they appear in the catalog. Bidding normally begins below the low estimate. The auctioneer will accept bids from interested parties present in the saleroom, from telephone bidders, and from absentee bidders who have left written bids in advance of the sale. The auctioneer may also execute bids on behalf of the consignor up to the amount of the reserve, but never above it.

We assume no responsibility for failure to execute bids for any reason whatsoever.

### In Person

If you are planning to bid at auction, you will need to register at the reception desk in order to receive a numbered bid card. To place a bid, hold up your card so that the auctioneer can clearly see it. Decide on the maximum amount that you wish to pay, exclusive of buyer's premium and tax, and continue bidding until your bid prevails or you reach your limit. If you are the successful bidder on a lot, the auctioneer will acknowledge your paddle number and bid amount.

### Absentee Bids

As a service to those wishing to place bids, we may at our discretion accept bids without charge in advance of sale by telephone, by facsimile or in writing on bidding forms available from us. "Buy" bids will not be accepted; all bids must state the highest bid price the bidder is willing to pay. Our auction staff will try to bid just as you would, with the goal of obtaining the

item at the lowest bid price possible. In the event identical bids are submitted, the earliest bid submitted will take precedence. Absentee bids shall be executed in competition with other absentee bids, any applicable reserve, and bids from other auction participants. A friend or agent may place bids on your behalf, provided that we have received your written authorization prior to the sale. Absentee bid forms are available in our catalogs, online at [www.bonhams.com/us](http://www.bonhams.com/us), and at our San Francisco, Los Angeles and New York galleries.

### By Telephone

Under special circumstances, we can arrange for you to bid by telephone. To arrange for a telephone bid, please contact our Client Services Department a minimum of 24 hours prior to the sale.

### Online

Web users may place absentee bids online from anywhere in the world. To bid online, please visit our website at [www.bonhams.com/us](http://www.bonhams.com/us).

We are pleased to make our live online bidding facility available to bidders in this sale.

Additional terms and conditions of sale relating to online bidding will apply. Please see [www.bonhams.com/26210](http://www.bonhams.com/26210) or contact the Client Services Department to obtain information and learn how you can register and bid online in this sale.

### Bid Increments

Bonhams generally uses the following increment multiples as bidding progresses:

\$50-200 .....	by \$10s
\$200-500 .....	by \$20/50/80s
\$500-1,000 .....	by \$50s
\$1,000-2,000 .....	by \$100s
\$2,000-5,000 .....	by \$200/500/800s
\$5,000-10,000 .....	by \$500s
\$10,000-20,000 .....	by \$1,000s
\$20,000-50,000 .....	by \$2,000/5,000/8,000s
\$50,000-100,000 .....	by \$5,000s
\$100,000-200,000 .....	by \$10,000s
above \$200,000 .....	at auctioneer's discretion

**The auctioneer may split or reject any bid at any time at his or her discretion as outlined in the Conditions of Sale.**

### Currency Converter

Solely for the convenience of bidders, a currency converter may be provided at Bonhams sales. The rates quoted for conversion of other currencies to U.S. Dollars are indications only and should not be relied upon by a bidder, and neither Bonhams nor its agents shall be responsible for any errors or omissions in the operation or accuracy of the currency converter.

### Buyer's Premium

A buyer's premium is added to the winning bid price of each individual lot purchased, at the rates set forth in the Conditions of Sale. The winning bid price plus the premium constitute the purchase price for the lot. Applicable sales taxes are computed based on this figure, and the total becomes your final purchase price.

Unless specifically illustrated and noted, fine art frames are not included in the estimate or purchase price. Bonhams accepts no liability for damage or loss to frames during storage or shipment.

All sales are final and subject to the Conditions of Sale found in our catalogs, on our website, and available at the reception desk.

### Payment

All buyers are asked to pay and pick up by 3pm on the business day following the auction. Payment may be made to Bonhams by cash, checks drawn on a U.S. bank, money order, wire transfer, or by Visa, MasterCard, American Express or Discover credit or charge card or debit card. All items must be paid for within 5 business days of the sale. Please note that payment by personal or business check may result in property not being released until purchase funds clear our bank.

### Sales Tax

Residents of states listed in Paragraph 1 of the Conditions of Sale must pay applicable sales tax. Other state or local taxes (or compensation use taxes) may apply. Sales tax will be automatically added to the invoice unless a valid resale number has been furnished or the property is shipped via common carrier to destinations outside the states listed in

the Conditions of Sale. If you wish to use your resale license please contact Cashiers for our form.

### Shipping & Removal

Bonhams can accommodate shipping for certain items. Please contact our Cashiers Department for more information or to obtain a quote. Refer to Conditions of Sale for special terms governing the shipment of Arms and Wine. Shipments are made during weekday business hours up to four weeks after payment is received. Carriers are not permitted to deliver to P.O. Boxes.

International buyers are responsible for all import/export customs duties and taxes. An invoice stating the actual purchase price(s) will accompany all international purchases.

### Simultaneous sale property collection notice:

If this sale previews in multiple cities, please see the title page for details regarding final location of property for collection.

### Auction Results

Auction results are usually available on the next business day following the sale or online at [www.bonhams.com/us](http://www.bonhams.com/us).

# Auction Registration Form

(Attendee / Absentee / Online / Telephone Bidding)  
Please circle your bidding method above.

--	--	--	--

**Paddle number (for office use only)**

**General Notice:** This sale will be conducted in accordance with Bonhams Conditions of Sale, and your bidding and buying at the sale will be governed by such terms and conditions. Please read the Conditions of Sale in conjunction with the Buyer's Guide relating to this sale and other published notices and terms relating to bidding. Payment by personal or business check may result in your property not being released until purchase funds clear our bank. Checks must be drawn on a U.S. bank.

**Notice to Absentee Bidders:** In the table below, please provide details of the lots on which you wish to place bids at least 24 hours prior to the sale. Bids will be rounded down to the nearest increment. Please refer to the Buyer's Guide in the catalog for further information relating to instructions to Bonhams to execute absentee bids on your behalf. Bonhams will endeavor to execute bids on your behalf but will not be liable for any errors or non-executed bids.

**Notice to First Time Bidders:** New clients are requested to provide photographic proof of ID - passport, driving license, ID card, together with proof of address - utility bill, bank or credit card statement etc. Corporate clients should also provide a copy of their articles of association / company registration documents, together with a letter authorizing the individual to bid on the company's behalf. Failure to provide this may result in your bids not being processed. For higher value lots you may also be asked to provide a bankers reference.

**Notice to online bidders;** If you have forgotten your username and password for [www.bonhams.com](http://www.bonhams.com), please contact Client Services.

**If successful**

- I will collect the purchases myself
- Please contact me with a shipping quote (if applicable)
- I will arrange a third party to collect my purchase(s)

**Please email or fax the completed Registration Form and requested information to:**

Bonhams Client Services Department  
7601 W. Sunset Blvd  
Los Angeles, California 90046  
Tel +1 (323) 850 7500  
Fax +1 (323) 850 6090  
bids.us@bonhams.com

# Bonhams

Sale title: California Jewels		Sale date: March 10, 2020	
Sale no. 26210		Sale venue: Los Angeles	
<b>General Bid Increments:</b>			
\$10 - 200 .....by 10s		\$10,000 - 20,000 .....by 1,000s	
\$200 - 500 .....by 20 / 50 / 80s		\$20,000 - 50,000 .....by 2,000 / 5,000 / 8,000s	
\$500 - 1,000 .....by 50s		\$50,000 - 100,000 .....by 5,000s	
\$1,000 - 2,000 .....by 100s		\$100,000 - 200,000 .....by 10,000s	
\$2,000 - 5,000 .....by 200 / 500 / 800s		above \$200,000 .....at the auctioneer's discretion	
\$5,000 - 10,000 .....by 500s		The auctioneer has discretion to split any bid at any time.	
Customer Number		Title	
First Name		Last Name	
Company name (to be invoiced if applicable)			
Address			
City		County / State	
Post / Zip code		Country	
Telephone mobile		Telephone daytime	
Telephone evening		Fax	
Telephone bidders: indicate primary and secondary contact numbers by writing ① or ② next to the telephone number.			
E-mail (in capitals) _____			
By providing your email address above, you authorize Bonhams to send you marketing materials and news concerning Bonhams and partner organizations. Bonhams does not sell or trade email addresses.			
I am registering to bid as a private client <input type="checkbox"/>		I am registering to bid as a trade client <input type="checkbox"/>	
Resale: please enter your resale license number here _____ We may contact you for additional information.			

SHIPPING	
Shipping Address (if different than above):	
Address: _____	Country: _____
City: _____	Post/ZIP code: _____

**Please note that all telephone calls are recorded.**

Type of bid (A-Absentee, T-Telephone)	Lot no.	Brief description (In the event of any discrepancy, lot number and not lot description will govern.) If you are bidding online there is no need to complete this section.	MAX bid in US\$ (excluding premium and applicable tax) Emergency bid for telephone bidders only*

**You instruct us to execute each absentee bid up to the corresponding bid amount indicated above.**

\* Emergency Bid: A maximum bid (exclusive of Buyer's Premium and tax) to be executed by Bonhams only if we are unable to contact you by telephone or should the connection be lost during bidding.

BY SIGNING THIS FORM YOU AGREE THAT YOU HAVE READ AND UNDERSTAND OUR CONDITIONS OF SALE AND SHALL BE LEGALLY BOUND BY THEM, AND YOU AGREE TO PAY THE BUYER'S PREMIUM, ANY APPLICABLE TAXES, AND ANY OTHER CHARGES MENTIONED IN THE BUYER'S GUIDE OR CONDITIONS OF SALE. THIS AFFECTS YOUR LEGAL RIGHTS.	
Your signature: _____	Date: _____





**Bonhams**  
7601 W. Sunset Boulevard  
Los Angeles, California 90046

+1 323 850 7500  
bonhams.com

**AUCTIONEERS SINCE 1793**